
Subject: Cartouche 379

Posted by [John2019](#) on Fri, 19 Jul 2019 21:10:30 GMT

[View Forum Message](#) <> [Reply to Message](#)

Hi,

Best I can see this watch dates from the 1920's although I can't find a match for the case or face. The movement appears to be a Cartouche 1077, 17 Jewel.

The case is stamped 18c (assumed white gold) The case serial is 18247. Currently does not run. Any additional information/value estimate would be appreciated.

Model name : Gruen Precision

Type : ???

Period/date : 1920's???

Gender : Ladies

Case Maker :

Case Material : 18c

Case Serial : 18247

Case Style no : ??

Caliber :

Movement Maker :

Movement Serial: 619628

Bracelet :

Other info : www.gruenwristwatches.com/gruen-guild-era-books.php

Cartouche 17 jewel

[Picture Front]

[Picture caseback inside]

[Picture movement]

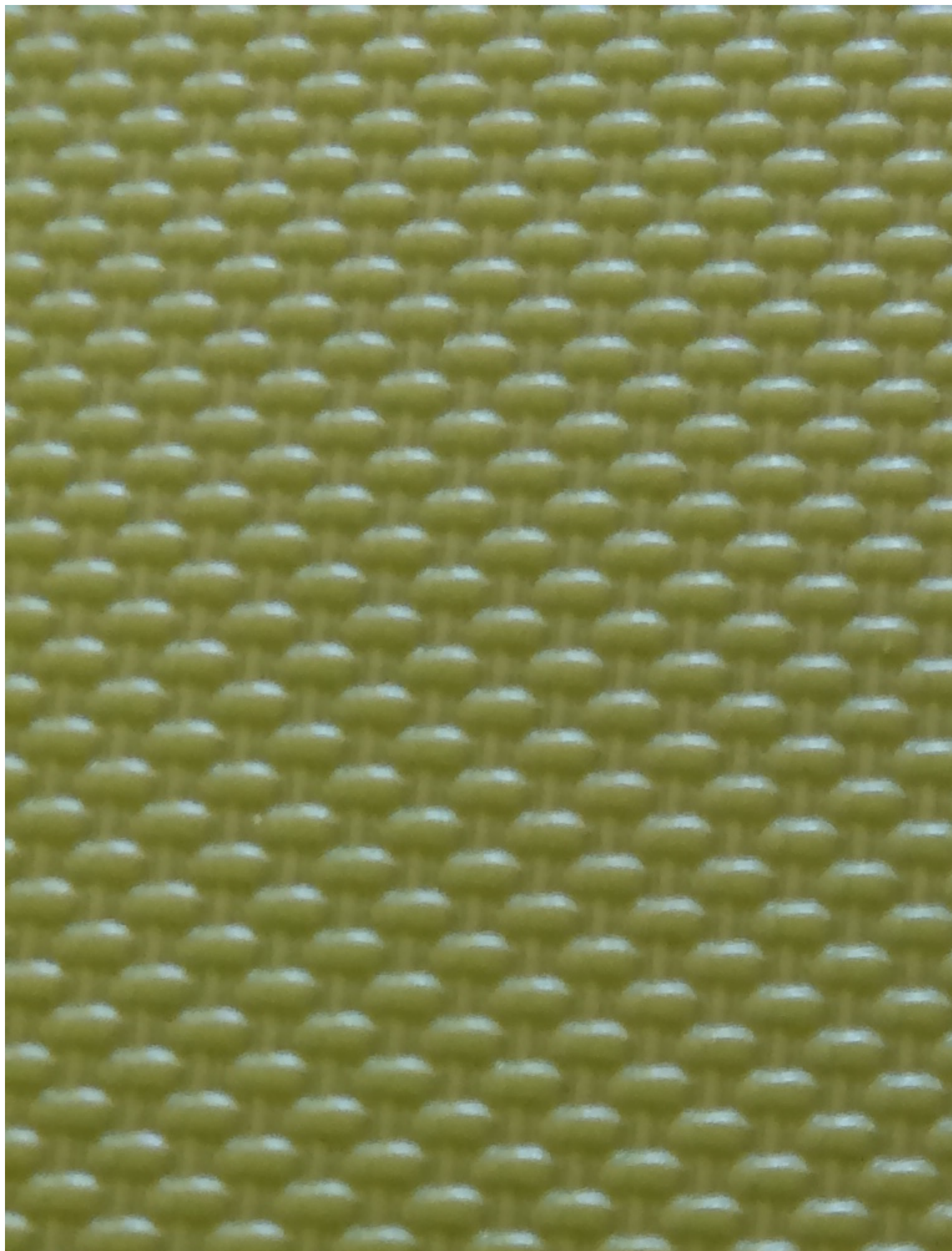
[Picture ad]

www.gruenwristwatches.com/gruen-guild-era-books.php

For named models, please include a source. This could be a book, an advertisement or an example seen on a website.

File Attachments

1) [IMG_6707.JPG](#), downloaded 2540 times



2) [IMG_7899.jpg](#), downloaded 2544 times



11

12

1

GRUEN
PRECISION

10

2

9

3

8

4

7

6

5

3) [IMG_7905.jpg](#), downloaded 2488 times



619628



GRUEN
WATCH
Co

JEWELS
SEVENTEEN
PRECISION
SWITZERLAND

47