
Subject: Re: Gruen Ladies Watch

Posted by [John2019](#) on Sat, 20 Jul 2019 14:09:23 GMT

[View Forum Message](#) <> [Reply to Message](#)

Jenneke, Barney,

Thanks for your comments. Jenneke, thanks for finding the model! I too was curious about the crown. (and was thinking that would be something easy to spot in a Gruen catalogue).

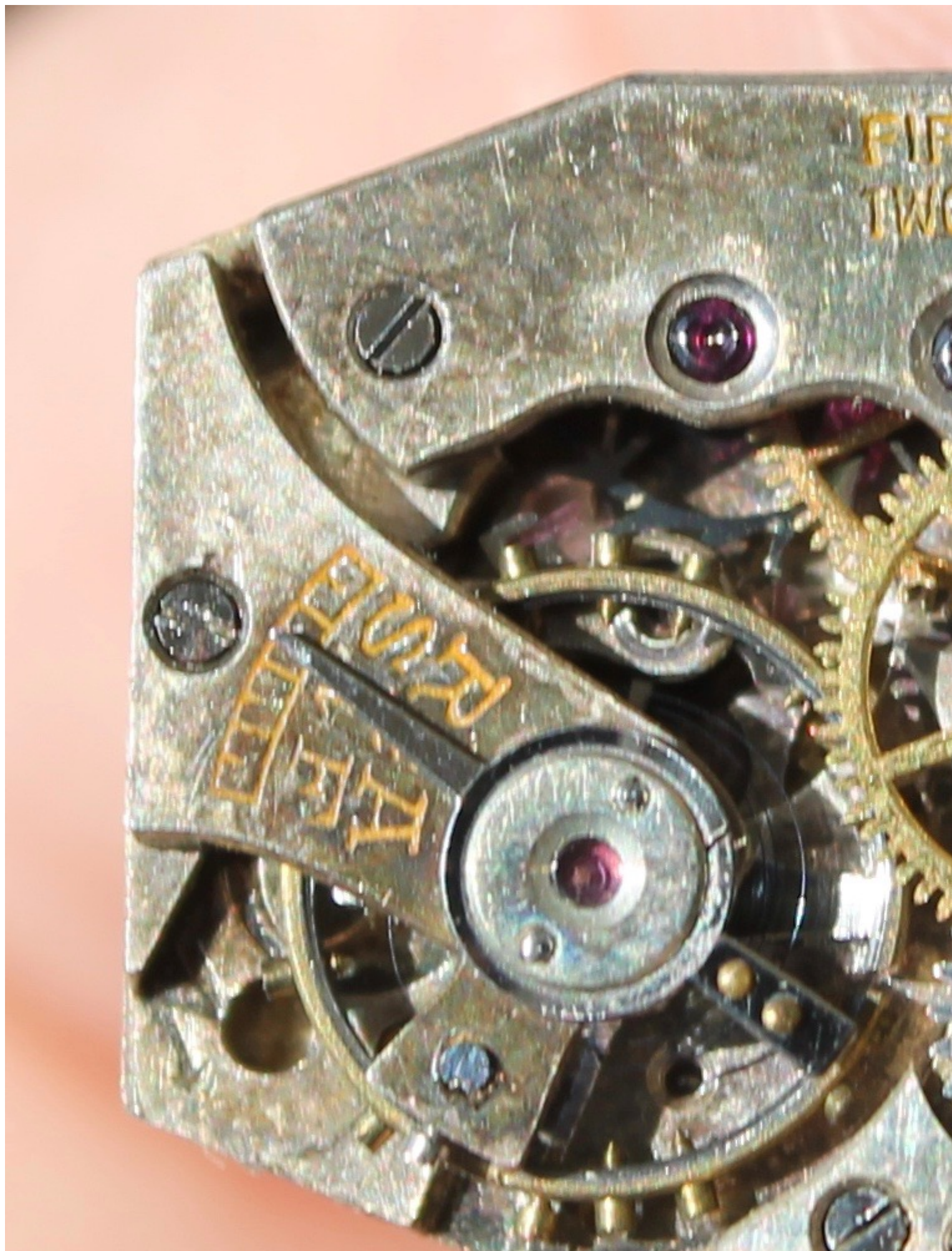
I also inherited a Diel Manfred 15 jewel watch, similar size and face in a pendant case that is missing the crown, I am wondering if that is where the crown comes from.

Barney, thanks for the info on the case marks.

John

File Attachments

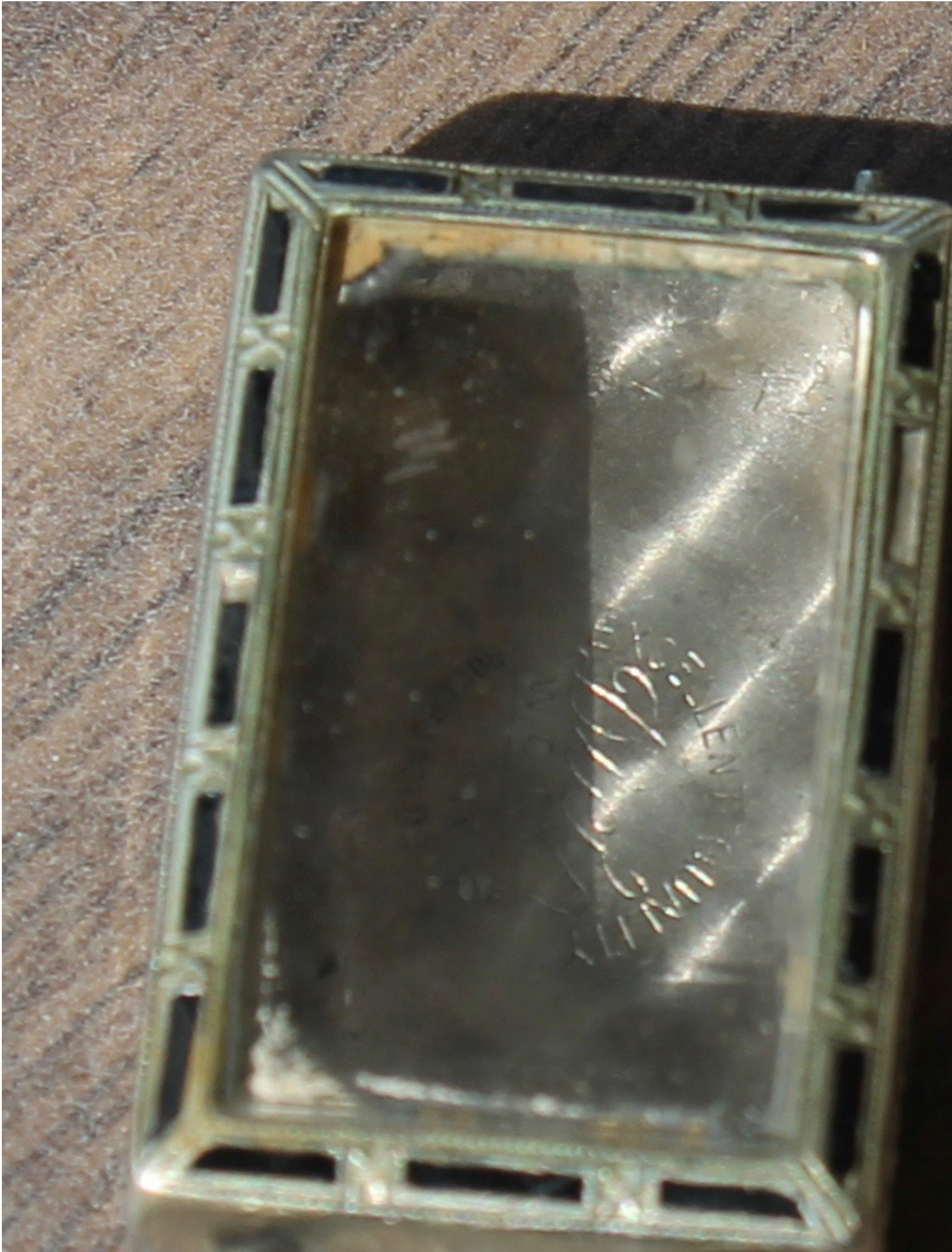
1) [IMG_7910.jpg](#), downloaded 926 times



2) [IMG_7911.jpg](#), downloaded 937 times



3) [IMG_7915.jpg](#), downloaded 904 times



GOLDEN
SILVER