
Subject: Precision Caliber 90 / 91 / 92 / 93 (Gruen Watch Co.)

Posted by [Case](#) on Mon, 07 Oct 2019 17:13:19 GMT

[View Forum Message](#) <> [Reply to Message](#)

Based on the many discussions around cal 91-92-93 recently, wanted to share this example. Stamped as cal 92, seemingly cataloged as cal 93. Interesting setting mechanism.

Introduction date: 1911

Identification method: "92" stamped both on back of dial & between bridges. I also say caliber 93, as this appears to be an orphaned radium dial version of Strap model 12 (note hands vs Strap 11 shown with radium dial), which Master Book lists as caliber 93

Size: 11"

Thickness: 4mm

Jewel marks: 17 Seventeen

Adj marks: Adjusted Temp

Other marks: movement # stamped on front plate & bridge, "Suisse" stamped on back plate near barrel bridge, "15078" stamped on back of dial (dial serial #??)

Example production date: 1923-1924, based on movement #

Dial feet locations: 1130 & 530 positions

Dial attachment means: side screws

File Attachments

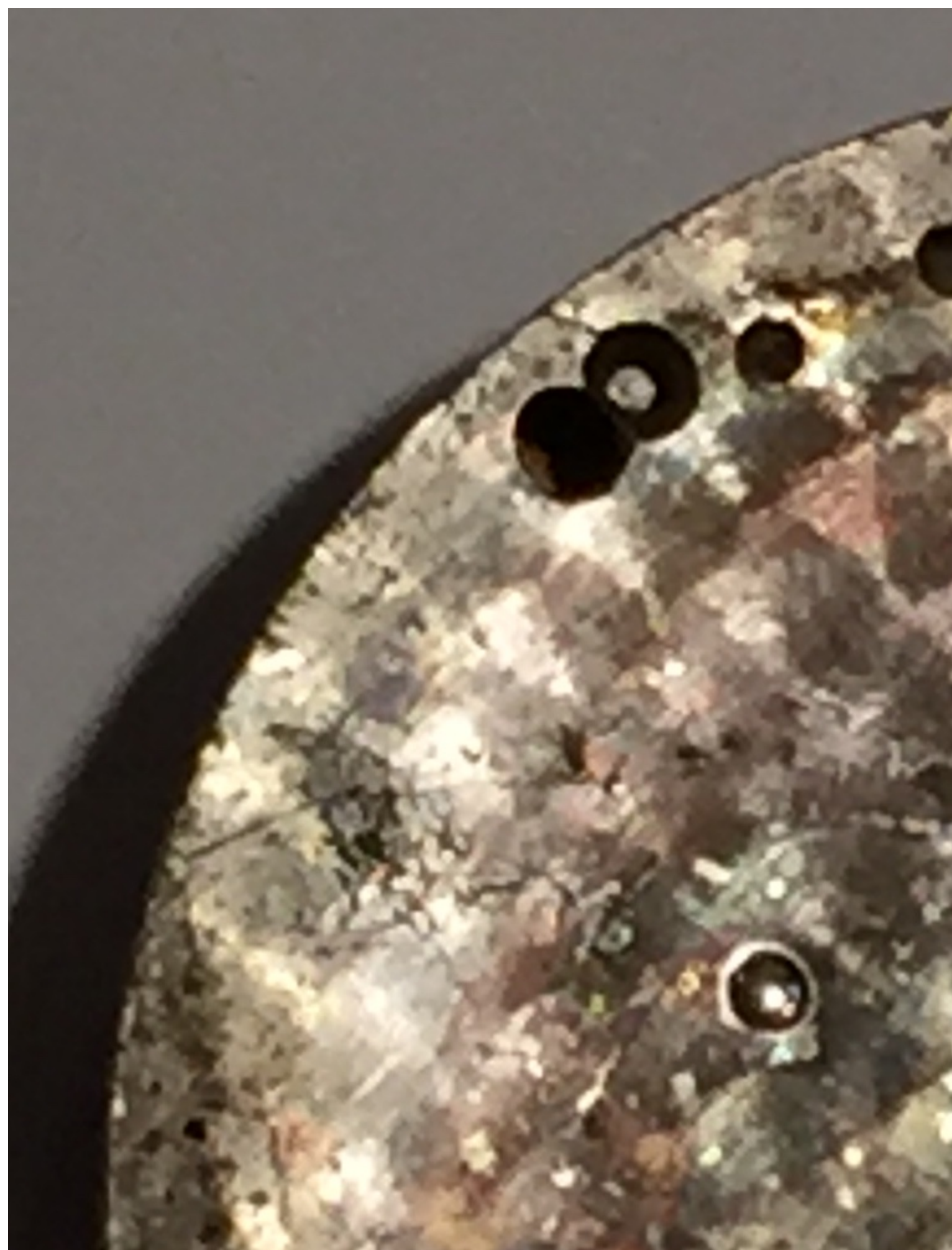
1) [cal 92-93 back.jpeg](#), downloaded 2476 times



2) [Cal 92-93 dial back marks.JPG](#), downloaded 2436 times



3) [Cal 92-93 front plate.jpeg](#), downloaded 2457 times



4) [Cal 92-93 front.jpeg](#), downloaded 2435 times



11

12

GRUEN
PRECISION

10

9

8

7

6

5) Cal 92-93 plate caliber 92 stamp.jpeg, downloaded 2440 times

