

---

Subject: Re: The Cal 870/871

Posted by [Case](#) on Tue, 22 Oct 2019 01:56:52 GMT

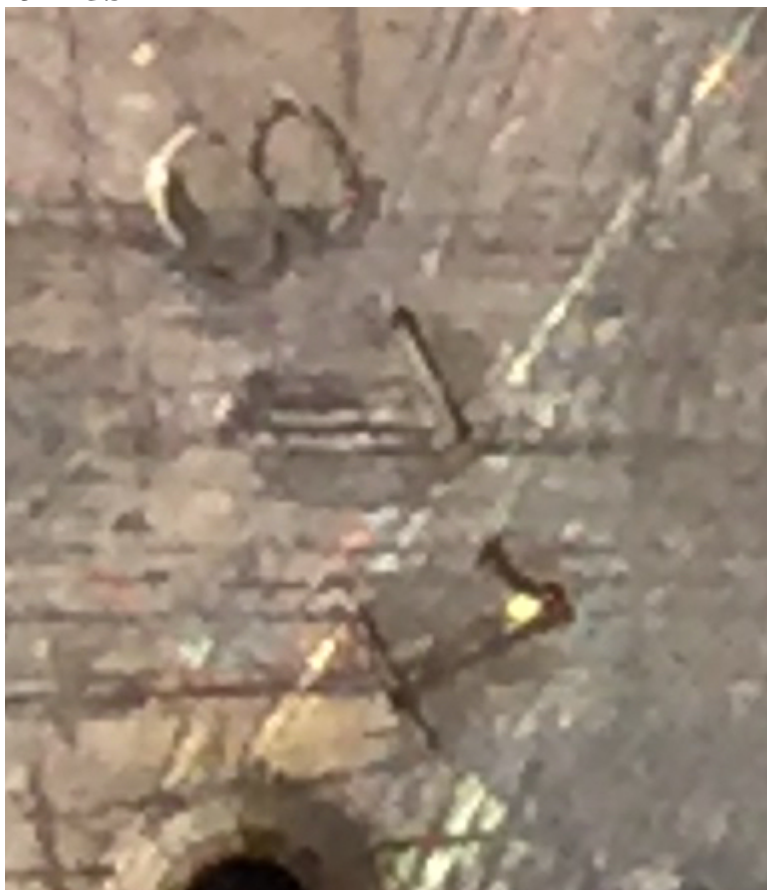
[View Forum Message](#) <> [Reply to Message](#)

---

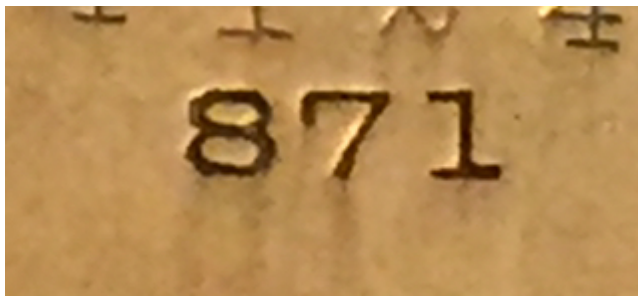
To the question of which was hunter vs. open face, here's another hunter example with WSC marks from a 1918 trench watch I'm restoring. Dial back and inside caseback both stamped "871", so the 870 will be the open face.

### File Attachments

1) [68513BDE-29B8-4AF6-B0C9-7BE8B3152290.jpeg](#), downloaded 729 times



2) [2F230AFA-6678-4572-A3D0-486CA0D2A1E9.jpeg](#), downloaded 742 times



3) [7D6CBA9B-7B1A-45D9-B4BF-A40299B6439B.jpeg](#), downloaded 695 times



4) [452D0802-E0C6-44DB-B81B-C833A03770EF.jpeg](#), downloaded 734 times

