

---

Subject: Cal 840 (841) - 5.5" 18J Extra Precision  
Posted by [Case](#) on Mon, 31 Aug 2020 13:24:01 GMT

[View Forum Message](#) <> [Reply to Message](#)

---

Classified "Extra Precision" in my 1926 parts catalogue, although not stamped with the diamond. Have yet to encounter the top-winding 841, which I presume is in necklace models. Showing a bridge side pic from my original copy of 26 parts catalogue.

Dims: 5.5 x 10 ligne

Dial mounts: 2 dial side screws

Front plate marks: sn & "A 32"

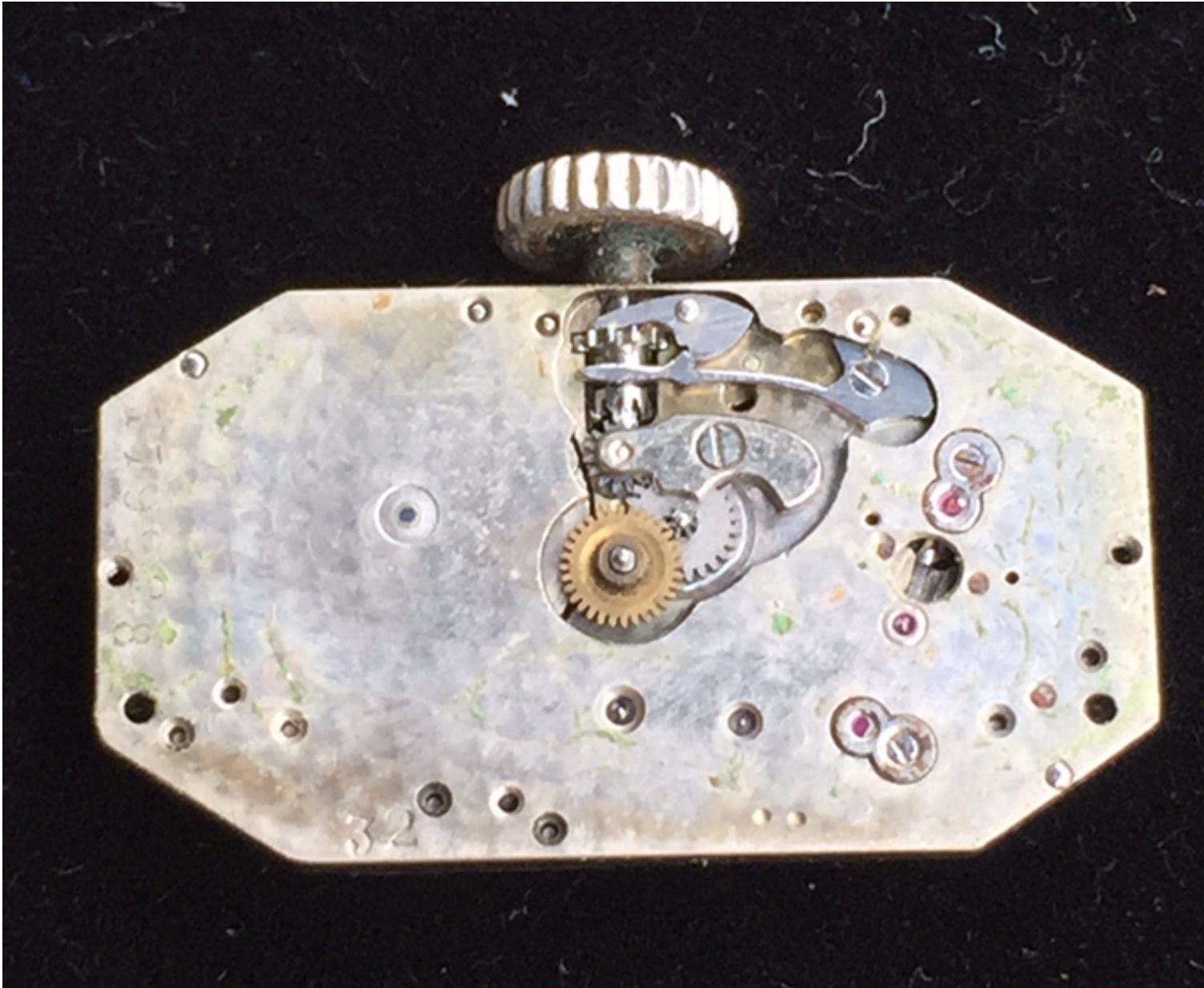
Dial maker: unsigned (illegible stamp, possible import or American Art Enamellers)

Dial markings: no "Switzerland"; has 2 serial #s etched in back: "179928" (matches movement) & "1023408"

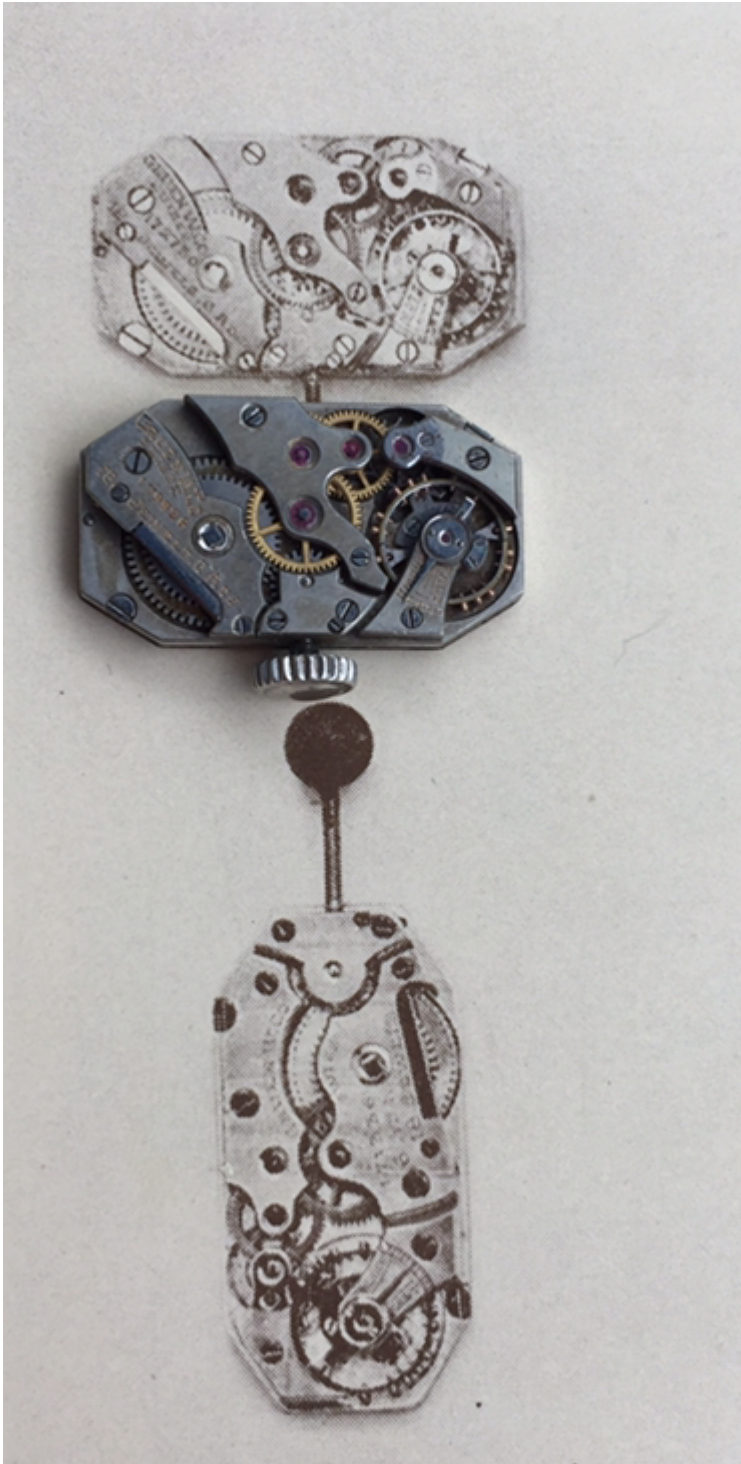
---

### File Attachments

1) [D22121D5-6ED7-43C7-8CC0-9833DC63D88C.jpeg](#), downloaded 1506 times

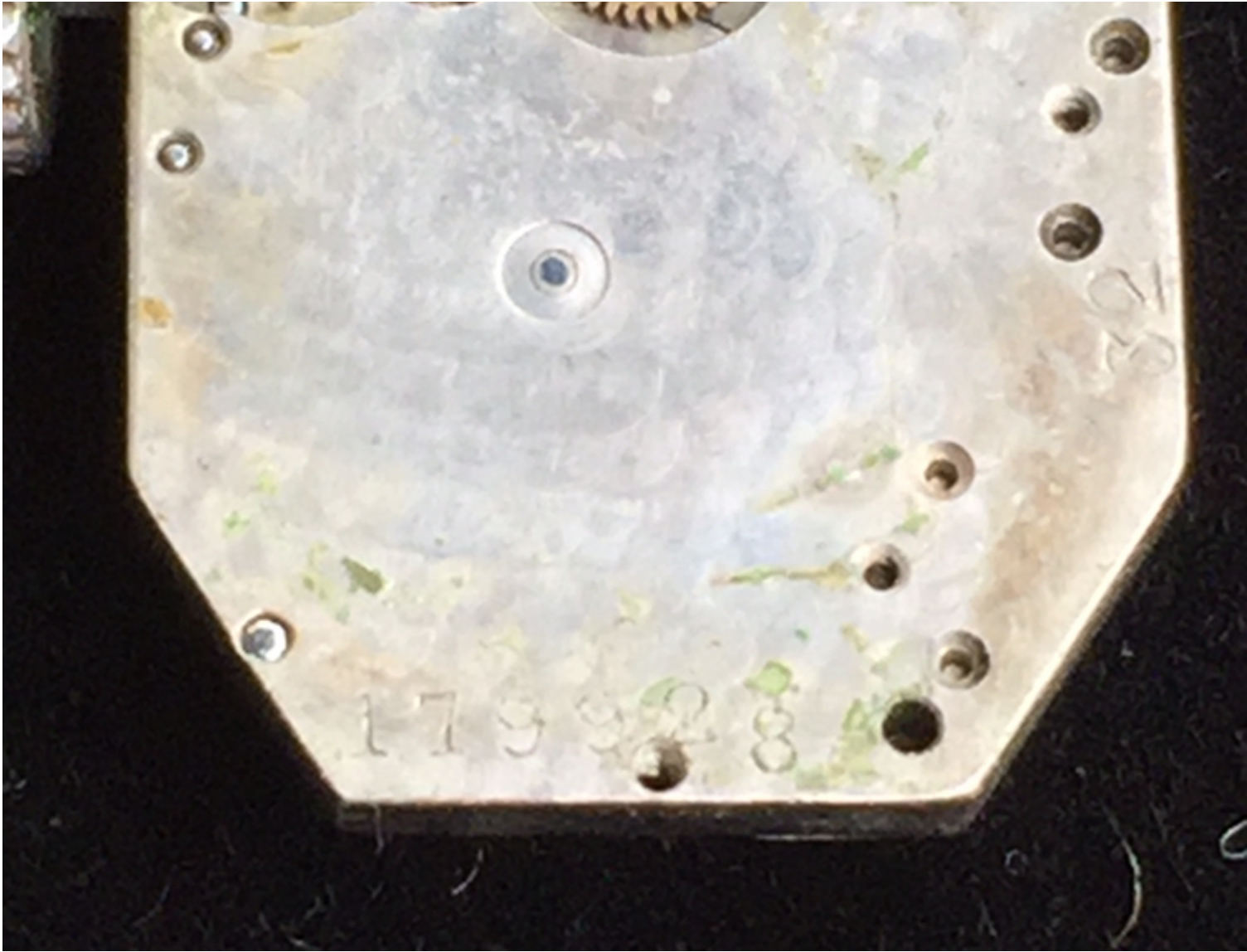


2) [4B36E2E9-1F79-42F9-8D74-33A2DC4D7ACF.jpeg](#), downloaded 1503 times

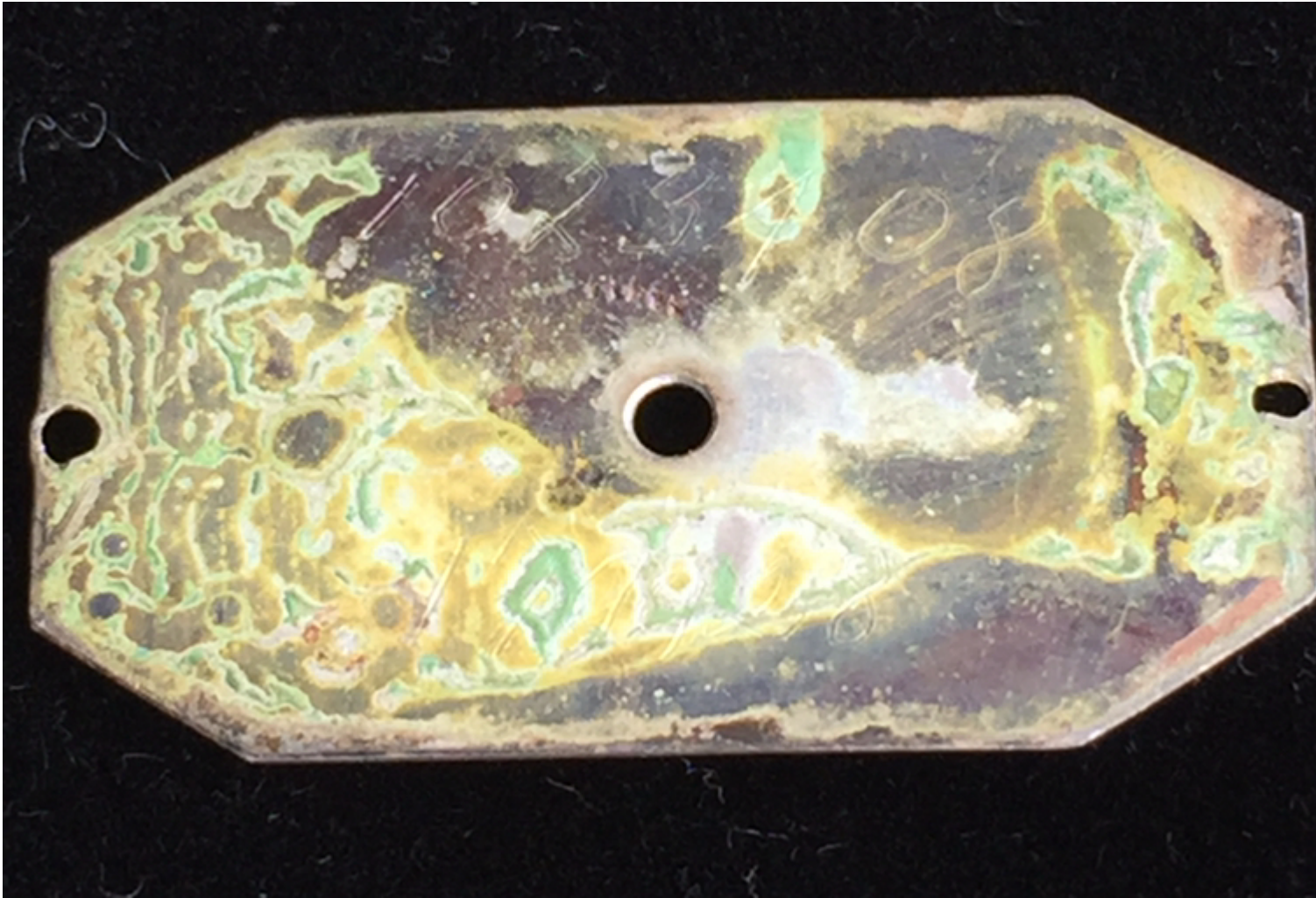


3) [82C459AB-C6DF-48DD-86AB-8BC2608D2AF8.jpeg](#), downloaded 1510 times





4) [F46E53FD-442B-43DB-9367-0DB9EA0C3B77.jpeg](#), downloaded 1552 times



5) [69002C1B-C39B-4747-80C0-0F6EACA21DD6.jpeg](#), downloaded 1532 times



