
Subject: cartouche 37

Posted by [Jenneke](#) on Wed, 03 Nov 2021 22:34:58 GMT

[View Forum Message](#) <> [Reply to Message](#)

Model name: car. 37

Type: cartouche

Period/date: end of 1923

Gender: female

Case Maker: wadsworth

Case Material: 14k gold reinforced with metal

Case Serial: 761996

Case Style no: 59

Caliber: 833 (15 jewels, 4 adjts)

Movement Maker: aegler

Movement Serial: none

Bracelet: black ribbon with B&N 1-10 k pat 830021? Clasp

Other: nice scratched numbers inside bezel

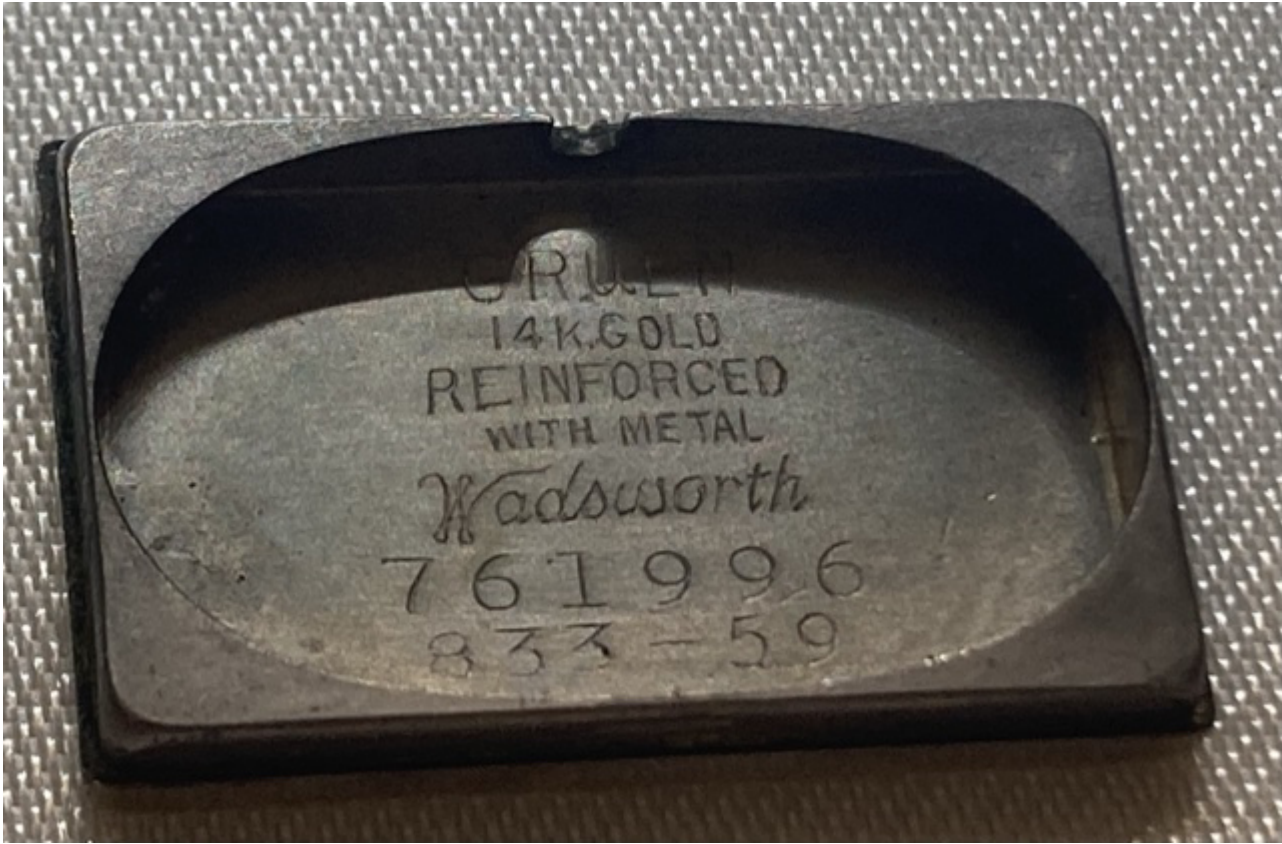
Edit: named! (Or should say, numbered)

File Attachments

1) [1205E68E-1D7B-464E-8E16-5C88657AC7C2.jpeg](#), downloaded 1740 times



2) [87DA5B51-8E57-4289-BDB4-FDF66B2DDD86.jpeg](#), downloaded 1662 times



3) [807FD62F-A421-4041-B4AD-CCA08F20C356.jpeg](#), downloaded 1589 times



4) [DCF9B94-36BE-41E6-A903-33419EE54A7F.jpeg](#), downloaded 1662 times



5) [CEC9D4DD-027F-405F-9BCB-B97E1A73FFF2.jpeg](#), downloaded 1643 times



6) [DF42A916-31F5-498C-BA8B-E9837C4ED471.jpeg](#), downloaded 1642 times



7) [EB0C82D6-04E0-4A5C-8490-9B718FC36EBB.jpeg](#), downloaded 1628 times

