

---

Subject: Blue paper Watch glasses box  
Posted by [Jenneke](#) on Fri, 22 Mar 2024 16:13:07 GMT  
[View Forum Message](#) <> [Reply to Message](#)

---

#### Description

A dark blue paper box for Gruen double Lentile watch glasses. Assortment AL1 and AL2?  
Contained 2 times 1 gross (=12x12) glasses.

Period: 1916-1920?

Watch type: for Ladies' and Gentlemen's Wrist Watches

Size: width 17cm, depth 7 cm and height 3cm

Inventor:

Patents: for the Double Lentille trademark 12th may 1916

Box maker: unknown

Crystal maker: unknown Swiss

Box seller: F.J. Boesse&Co, 68 Nassau street, New York

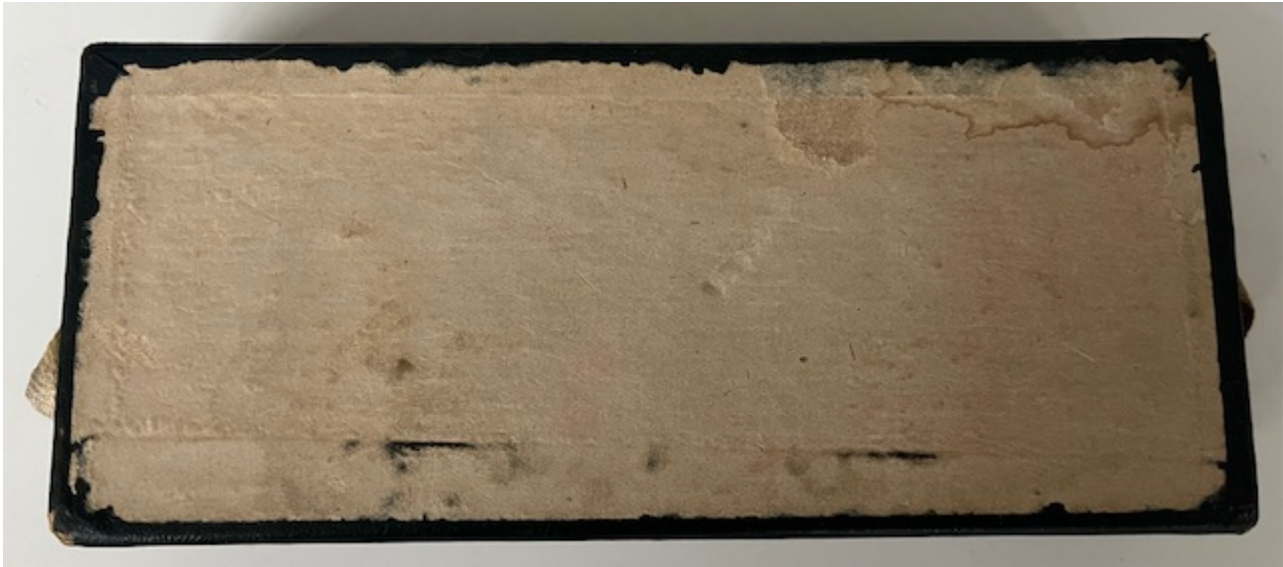
---

#### File Attachments

1) [IMG\\_0943.jpeg](#), downloaded 2797 times



2) [IMG\\_0944.jpeg](#), downloaded 2761 times



3) [IMG\\_0945.jpeg](#), downloaded 2796 times



4) [IMG\\_0946.jpeg](#), downloaded 2772 times

