
Subject: WTB Case Back for Ladies Pan Am
Posted by [koskid](#) on Tue, 03 Dec 2024 22:50:12 GMT
[View Forum Message](#) <> [Reply to Message](#)

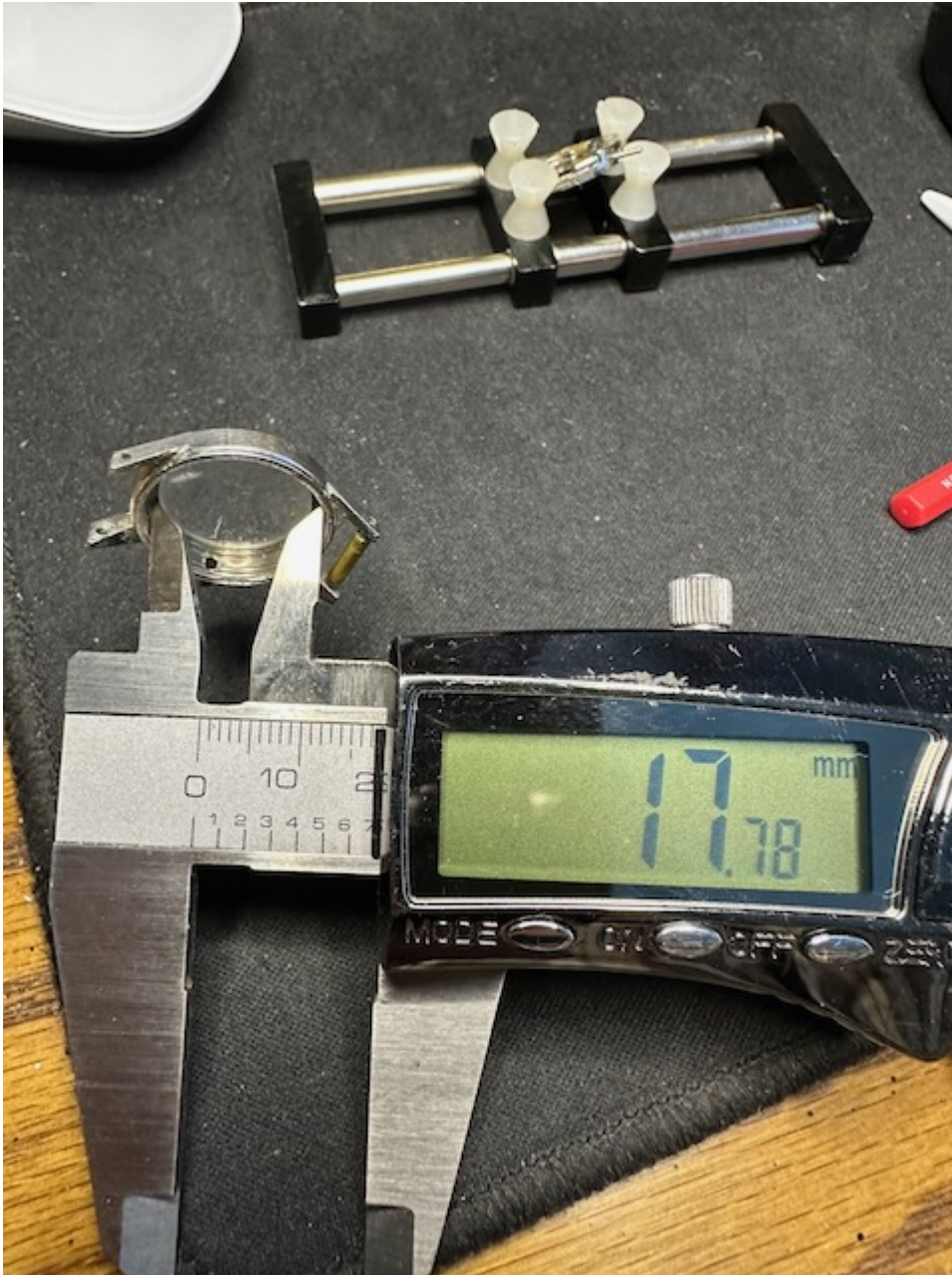
Hello,

I found a Ladies Pan Am buried in my box of watches in need of repair. It's missing the case back and I wonder if anyone has a Guildite case baok that would fit this watch they are willing to sell.

This watch has a 210SS movement that had a broken staff, but I've taken care of that already. A couple of photos showing case dimensions are attached.

File Attachments

1) [IMG_9534.jpeg](#), downloaded 1217 times



2) [IMG_9535.jpeg](#), downloaded 1215 times



3) [IMG_9536.jpeg](#), downloaded 1215 times

