

---

Subject: Ladies Wrist Watch -Cartouche 377  
Posted by [erin.marie](#) on Wed, 22 Jan 2014 23:20:04 GMT  
[View Forum Message](#) <> [Reply to Message](#)

---

Model name : Cartouche 377  
Type : Wrist Watch  
Period/date : 1920's  
Gender : Ladies

Case Maker : Gruen Cincinnati  
Case Material : 14K Solid Gold  
Case Serial : 1254052  
Case Style no : ?

Caliber : 313  
Movement Maker : Gruen Guild  
Movement Serial: 676808

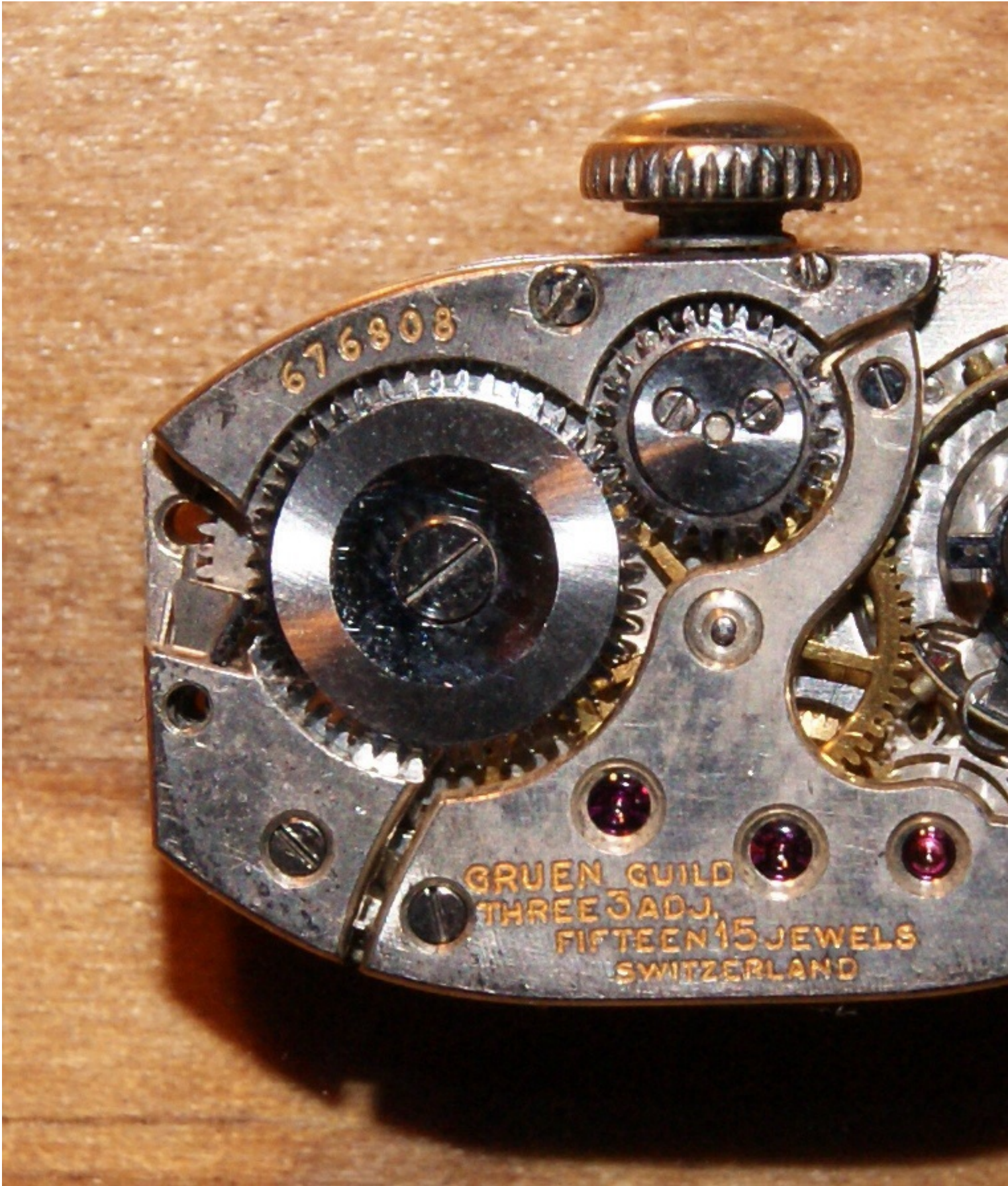
Bracelet : 10k Gold Filled

edit - JackW: picture alignment

### File Attachments

---

1) [image.jpg](#), downloaded 1283 times



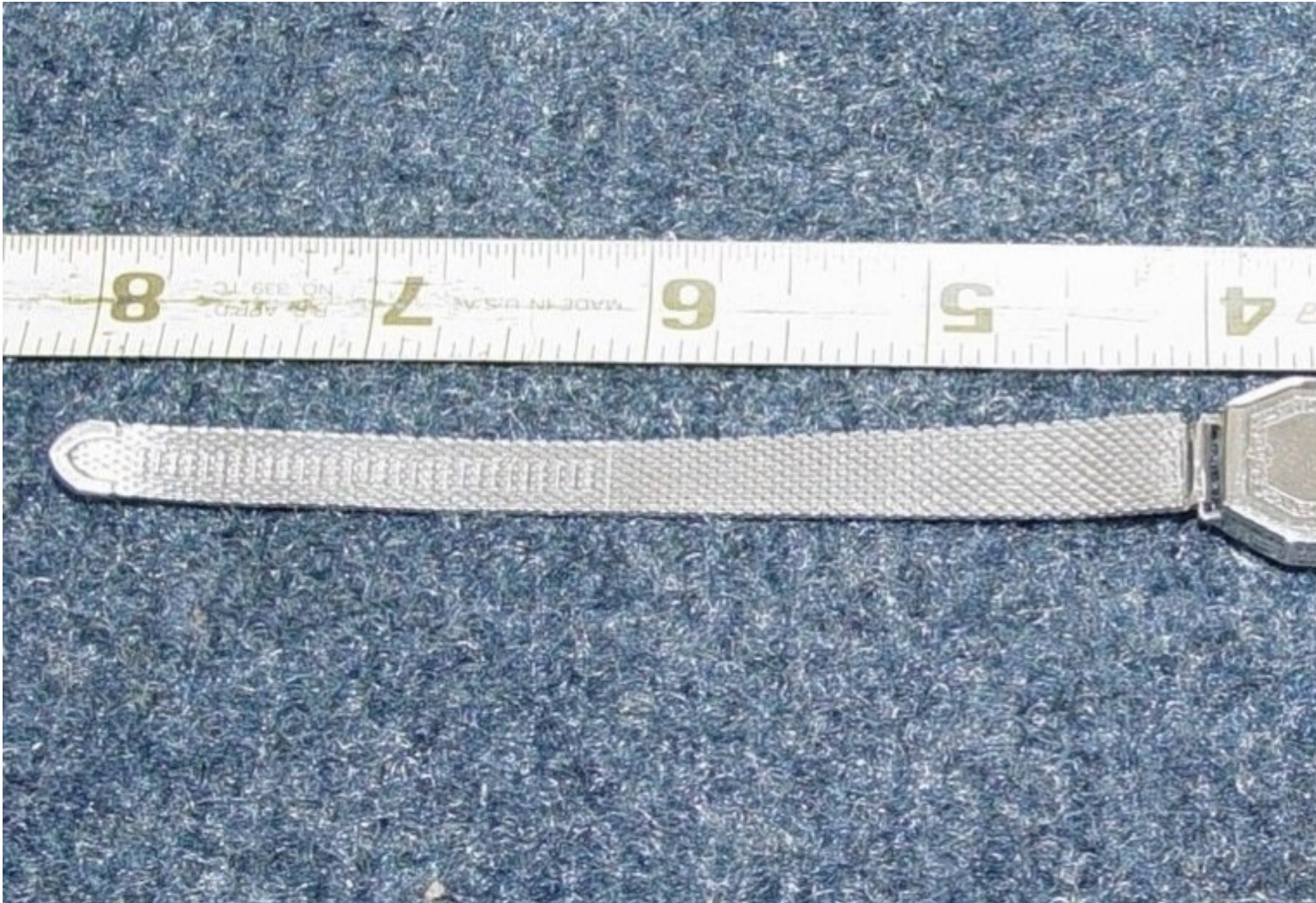
2) [image.jpg](#), downloaded 1283 times



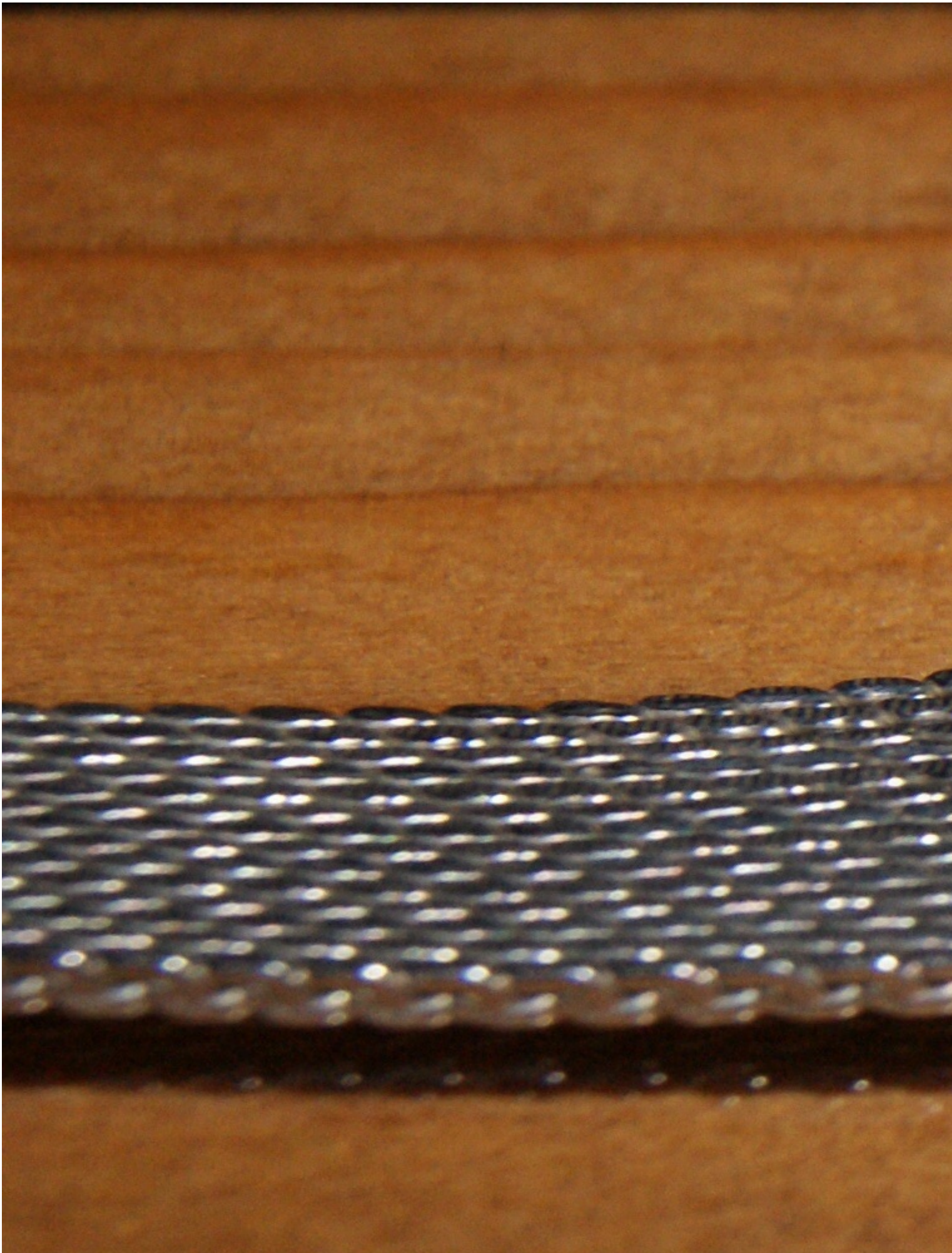
3) [image.jpg](#), downloaded 1304 times



4) [image.jpg](#), downloaded 1300 times



5) [image.jpg](#), downloaded 1329 times





6) [image.jpg](#), downloaded 1312 times



7) [image.jpg](#), downloaded 1247 times



8) [image.jpg](#), downloaded 1325 times



9) [image.jpg](#), downloaded 1291 times





10) [image.jpg](#), downloaded 1289 times

