
Subject: Autowind Ace

Posted by [puckstopper29](#) on Sat, 02 Dec 2017 20:15:12 GMT

[View Forum Message](#) <> [Reply to Message](#)

Model name : Autowind Ace

Type : Autowind

Period/date : 1950's

Gender : Gents

Case Maker : Gruen

Case Material : Guildite

Case Serial : 31315D

Case Style no :

Caliber : 460SS

Movement Maker :Gruen

Movement Serial:

Bracelet :

Other info :

Hello,

I am brand new to identifying watches and I'm looking for information on my dad's old Gruen. Seems like he said he got it in high school and he would have graduated in about 1950. I'm sorry for the poor photos. Stamped on the outside of the back cover is "31315D," and someone etched on the outside of the back cover "484491" (that's my best guess) or possibly "184491."

Inside the watch is a circled "460SS." Also "Gruenwatch Co Precision Switzerland Seventeen 17 Jewels IG43874 Unadjusted Autowind Veri-Thin Patented"

I hope some of this information is helpful. Looking for the model number and approximate date.

I've cruised the internet and have found some models very similar but not quite exactly the same as this watch.

Any help is appreciated

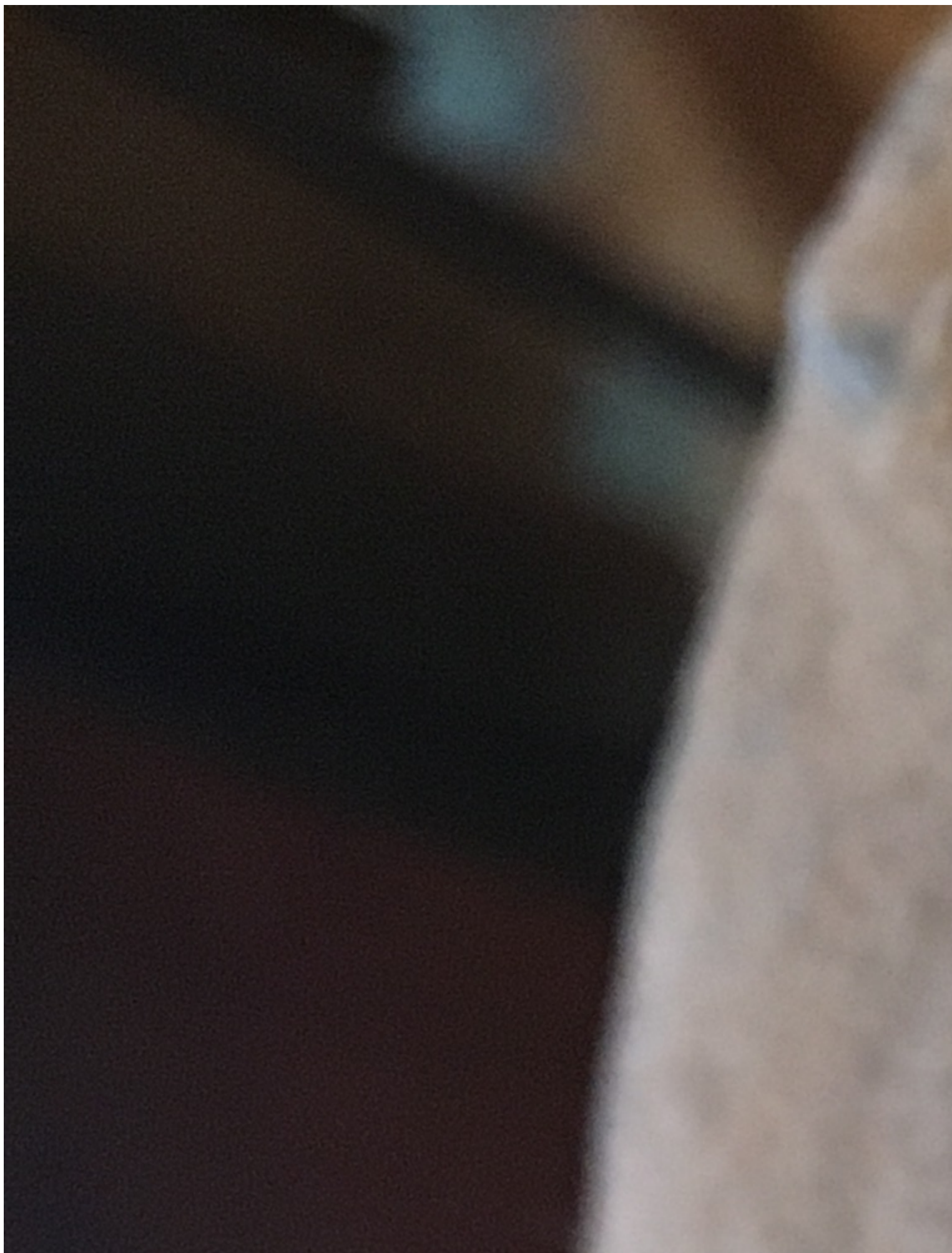
Thank you,

Scott

Edit - jackW (moderator) - inserted images into the body of the message

File Attachments

1) [IMG_3551.JPG](#), downloaded 1706 times



2) [IMG_3546.JPG](#), downloaded 1648 times



3) [IMG_3548.JPG](#), downloaded 1647 times



4) [IMG_3550.JPG](#), downloaded 1672 times

