

---

Subject: The Cal 870/871

Posted by [JackW](#) on Sun, 11 Feb 2018 18:32:45 GMT

[View Forum Message](#) <> [Reply to Message](#)

---

The caliber 871 and the 870 are the numbers for the open face/lupine (stem at 12-o'clock) or hunter/savonnette (stem at 3-o'clock) configurations.

Which one is which I'm not sure. They also came in a non-subseconds version too. There is also a variation in the setting works. Gruen and Rolex are not the only ones to use the movement either. Rumor has it that there is an outfit that will buy non-Rolex versions of this watch, mark the wheels with "Rolex" and then case and sell them as such.

Borel has the mainsprings listed with 1.60 x .14 x 340 11 and CousinsUK has them in 1.60 x .15 x 320 12. Both are white alloy.

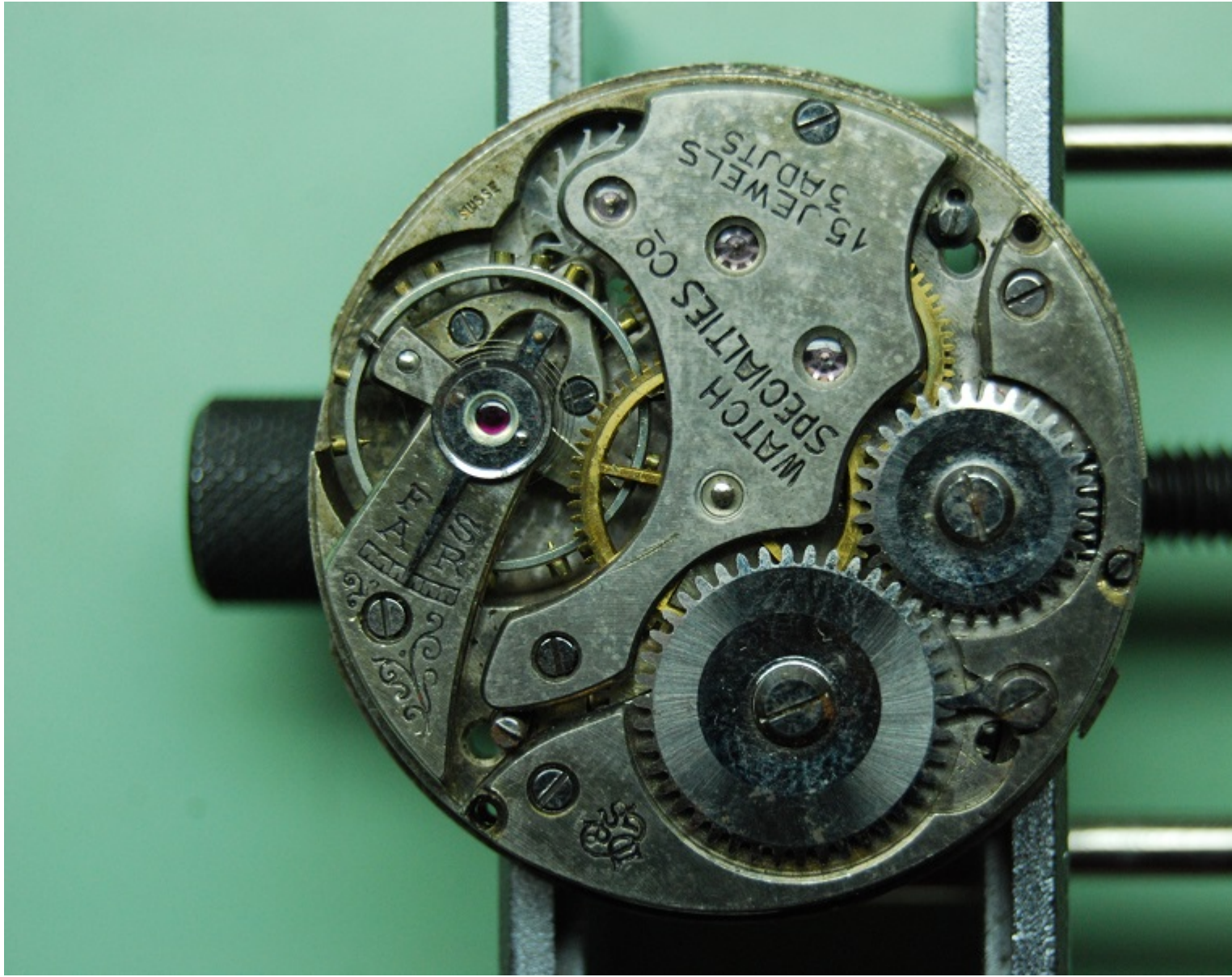
Gruen (1947 Horological Manual) has them as 1.65 x .15 x 320.

---

#### File Attachments

1) [Rebberg\\_870\\_bridges.jpg](#), downloaded 1944 times

---

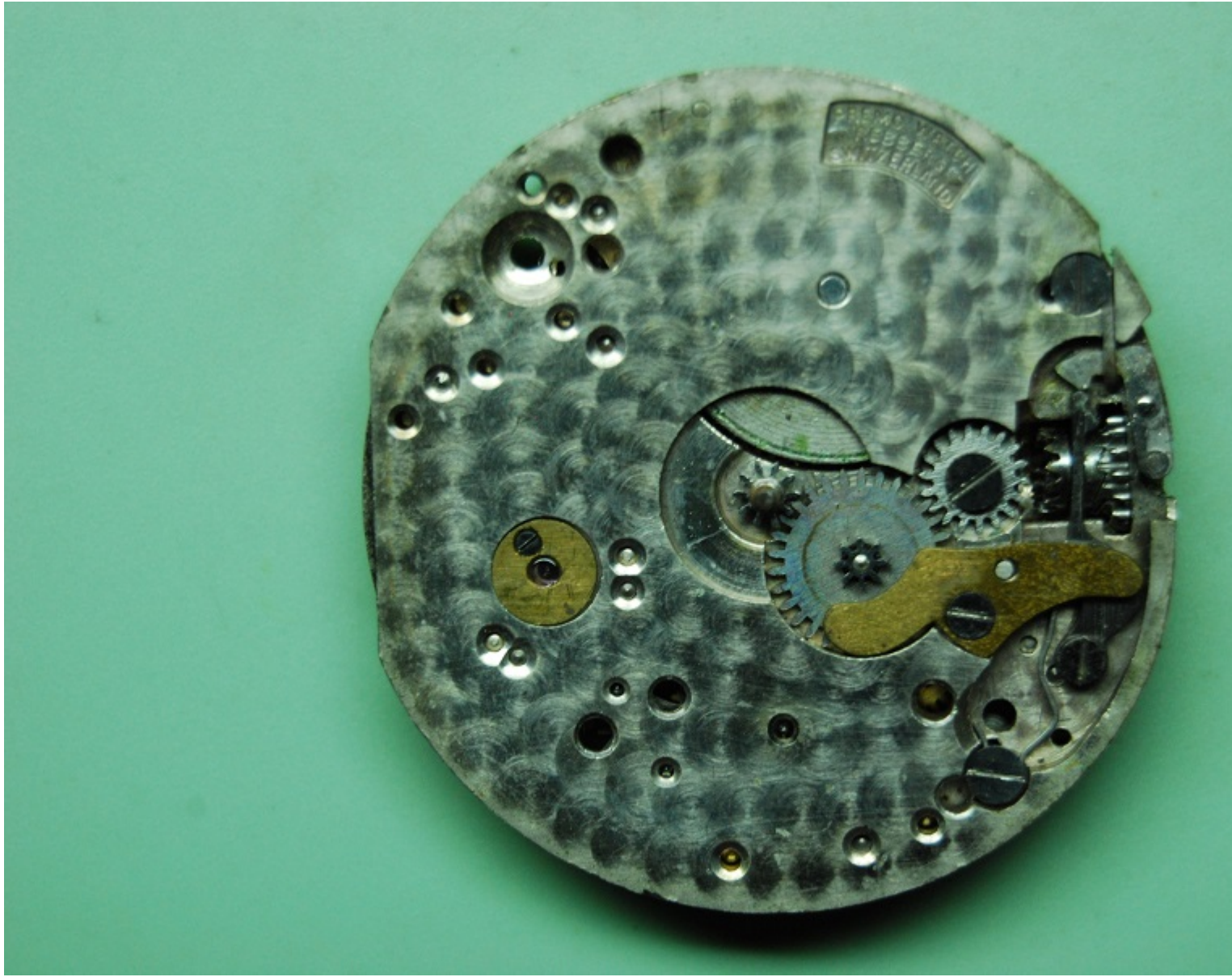


2) [Rebberg\\_870\\_marking.jpg](#), downloaded 1891 times



3) [Rebberg\\_870\\_top.jpg](#), downloaded 1907 times





---

Subject: Re: The Cal 870/871

Posted by [Case](#) on Tue, 22 Oct 2019 01:56:52 GMT

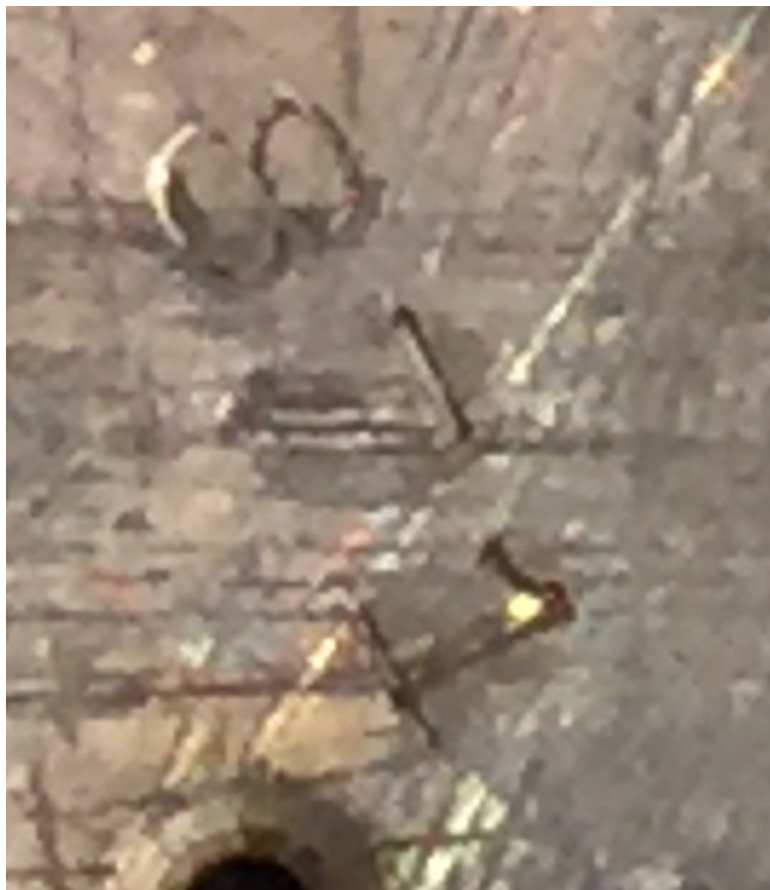
[View Forum Message](#) <> [Reply to Message](#)

To the question of which was hunter vs. open face, here's another hunter example with WSC marks from a 1918 trench watch I'm restoring. Dial back and inside caseback both stamped "871", so the 870 will be the open face.

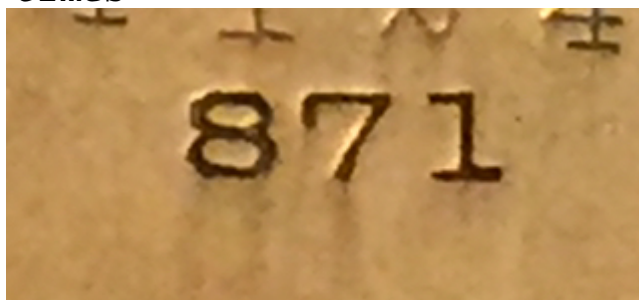
---

#### File Attachments

1) [68513BDE-29B8-4AF6-B0C9-7BEBB3152290.jpeg](#), downloaded 1512 times



2) [2F230AFA-6678-4572-A3D0-486CA0D2A1E9.jpeg](#), downloaded 1533 times



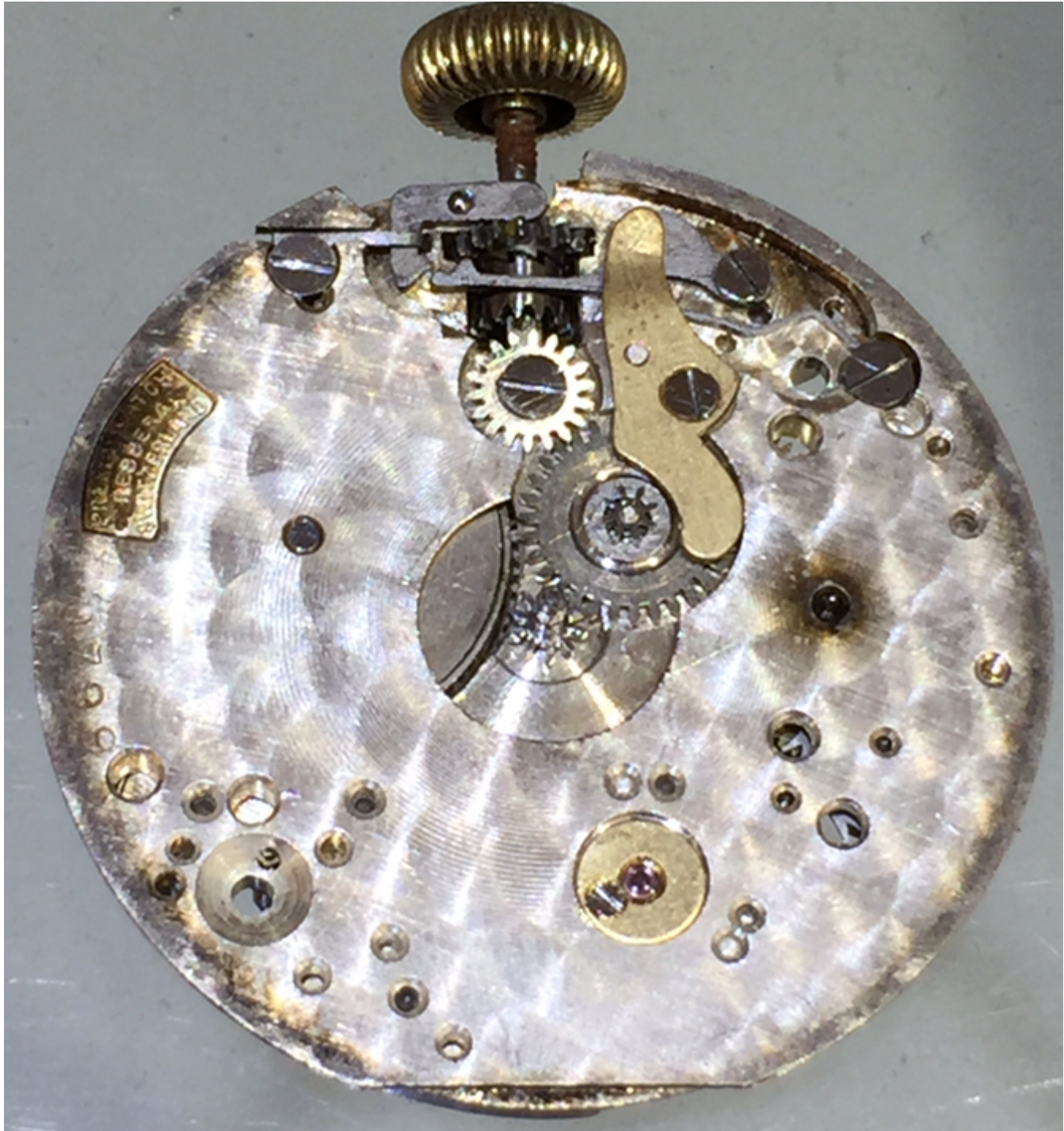
3) [7D6CBA9B-7B1A-45D9-B4BF-A40299B6439B.jpeg](#), downloaded 1475 times





4) [452D0802-E0C6-44DB-B81B-C833A03770EF.jpeg](#), downloaded 1547 times





---

Subject: Re: The Cal 870/871

Posted by [mikey](#) on Wed, 13 Nov 2019 19:58:23 GMT

[View Forum Message](#) <> [Reply to Message](#)

I have a DG&S 870 also in my collection that i believe was previously identified as a 'Rebberg' movement?. I'll have to disassemble it to take a photo of the top plate;

## File Attachments

---

1) [DG&S 870 Rebberg pocketwatch dial.JPG](#), downloaded 1551 times







2) [DG&S 870 Rebberg pocketwatch inside caseback.JPG](#),  
downloaded 1556 times





3) [DG&S 870 Rebberg pocketwatch movement 1.JPG](#), downloaded  
1573 times





WATCH  
SPECIALTIES CO

45 JEWELS  
3 ADJTS

4) [DG&S 870 Rebberg pocketwatch movement.JPG](#), downloaded 1583 times







Subject: Re: The Cal 870/871  
Posted by [Case](#) on Wed, 13 Nov 2019 20:37:08 GMT  
[View Forum Message](#) <> [Reply to Message](#)

---

Nice one, mikey! Is that an opera watch?

---

---

Subject: Re: The Cal 870/871  
Posted by [Gary](#) on Wed, 13 Nov 2019 22:02:55 GMT  
[View Forum Message](#) <> [Reply to Message](#)

---

Could be, no second hand, no need to keep precision time. ;-)

---

---

Subject: Re: The Cal 870/871  
Posted by [mikey](#) on Thu, 14 Nov 2019 18:14:49 GMT  
[View Forum Message](#) <> [Reply to Message](#)

---

Not sure if it would be an 'opera' watch but it was the first Gruen pocket watch that I collected a few years ago. I do remember posting it on the old vintage Gruen site.

---

---

Subject: Re: The Cal 870/871  
Posted by [thesnark17](#) on Fri, 15 Nov 2019 00:53:53 GMT  
[View Forum Message](#) <> [Reply to Message](#)

---

Generally these are called opera watches. The only watches that were ever sold as "opera watches" were Walthams - 6/0 movements in 10 or 12s cases. In other words exactly the same design as this one.

The advantage is that the watch is incredibly thin for its diameter - but this is somewhat deceptive, as you see.

---

---

Subject: Re: The Cal 870/871  
Posted by [Gary](#) on Wed, 18 Aug 2021 20:43:20 GMT  
[View Forum Message](#) <> [Reply to Message](#)

---

Bringing this thread back to life.

There is a Rolex trench out there that resembles the Gruen 22B. It's been referenced before that the 870 design by Rebberg was used by both Gruen and Rolex.

---

File Attachments

---



1) [rolex tranch.jpg](#), downloaded 1492 times



---

Subject: Re: The Cal 870/871

Posted by [JackW](#) on Thu, 26 Aug 2021 00:49:05 GMT

[View Forum Message](#) <> [Reply to Message](#)

---

GaryM wrote on Wed, 18 August 2021 14:43It's been referenced before that the 870 design by Rebborg was used by both Gruen and Rolex.

Here? And links therein?

---