

---

Subject: Cartouche 379

Posted by [John2019](#) on Fri, 19 Jul 2019 21:10:30 GMT

[View Forum Message](#) <> [Reply to Message](#)

---

Hi,

Best I can see this watch dates from the 1920's although I can't find a match for the case or face. The movement appears to be a Cartouche 1077, 17 Jewel.

The case is stamped 18c (assumed white gold) The case serial is 18247. Currently does not run. Any additional information/value estimate would be appreciated.

Model name : Gruen Precision

Type : ???

Period/date : 1920's???

Gender : Ladies

Case Maker :

Case Material : 18c

Case Serial : 18247

Case Style no : ??

Caliber :

Movement Maker :

Movement Serial: 619628

Bracelet :

Other info : [www.gruenwristwatches.com/gruen-guild-era-books.php](http://www.gruenwristwatches.com/gruen-guild-era-books.php)

Cartouche 17 jewel

[Picture Front]

[Picture caseback inside]

[Picture movement]

[Picture ad]

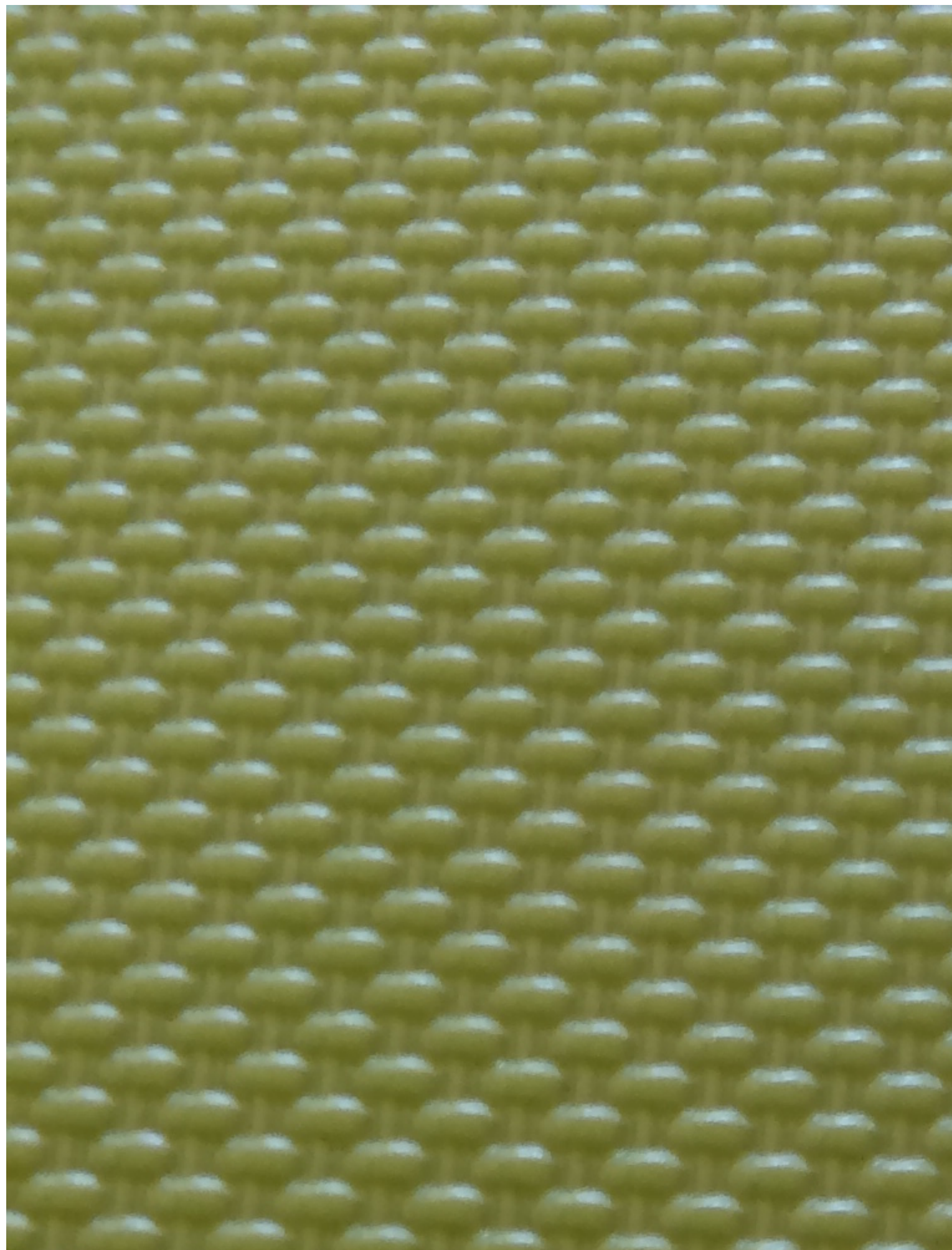
[www.gruenwristwatches.com/gruen-guild-era-books.php](http://www.gruenwristwatches.com/gruen-guild-era-books.php)

For named models, please include a source. This could be a book, an advertisement or an example seen on a website.

---

### File Attachments

1) [IMG\\_6707.JPG](#), downloaded 1728 times



2) [IMG\\_7899.jpg](#), downloaded 1712 times





3) [IMG\\_7905.jpg](#), downloaded 1655 times





6196280



GRUEN JEWELS  
WATCH SEVENTEEN  
Co PRECISION  
SWITZERLAND

47

Subject: Re: Gruen Ladies Watch  
Posted by [Jenneke](#) on Sat, 20 Jul 2019 06:07:51 GMT  
[View Forum Message](#) <> [Reply to Message](#)

---

Your watch might be this one:

From the 1929 guild book.

Your crown is not original.

About the case material, hope others run in. Don't know that 18c marking but could be 18 karat.  
What is stamped below it?

#### File Attachments

1) [8E66988F-33E3-406D-A882-510FD816BBA1.jpeg](#), downloaded 1334 times



Car. 379—14k Solid  
white gold Crown-  
Guard case. 17 jewel  
PRECISION movement,  
\$100

---

---



Subject: Re: Gruen Ladies Watch  
Posted by [Barney Green](#) on Sat, 20 Jul 2019 12:54:29 GMT  
[View Forum Message](#) <> [Reply to Message](#)

---

Yes I agree, it is a Cartouche 379 from 1929. The 18c marking is definitely for 18 karat, other than the Guild Book the Catalog lists Cartouche 379 being 18k, I assume that both versions existed. The marking below the 18c will be the Swiss Helvetia head export mark for 18k gold.

---

---

Subject: Re: Gruen Ladies Watch  
Posted by [John2019](#) on Sat, 20 Jul 2019 14:09:23 GMT  
[View Forum Message](#) <> [Reply to Message](#)

---

Jenneke, Barney,  
Thanks for your comments. Jenneke, thanks for finding the model! I too was curious about the crown. (and was thinking that would be something easy to spot in a Gruen catalogue).  
I also inherited a Diel Manfred 15 jewel watch, similar size and face in a pendant case that is missing the crown, I am wondering if that is where the crown comes from.  
Barney, thanks for the info on the case marks.

John

---

#### File Attachments

1) [IMG\\_7910.jpg](#), downloaded 1403 times

---



FIF  
TWO

ROSE  
A

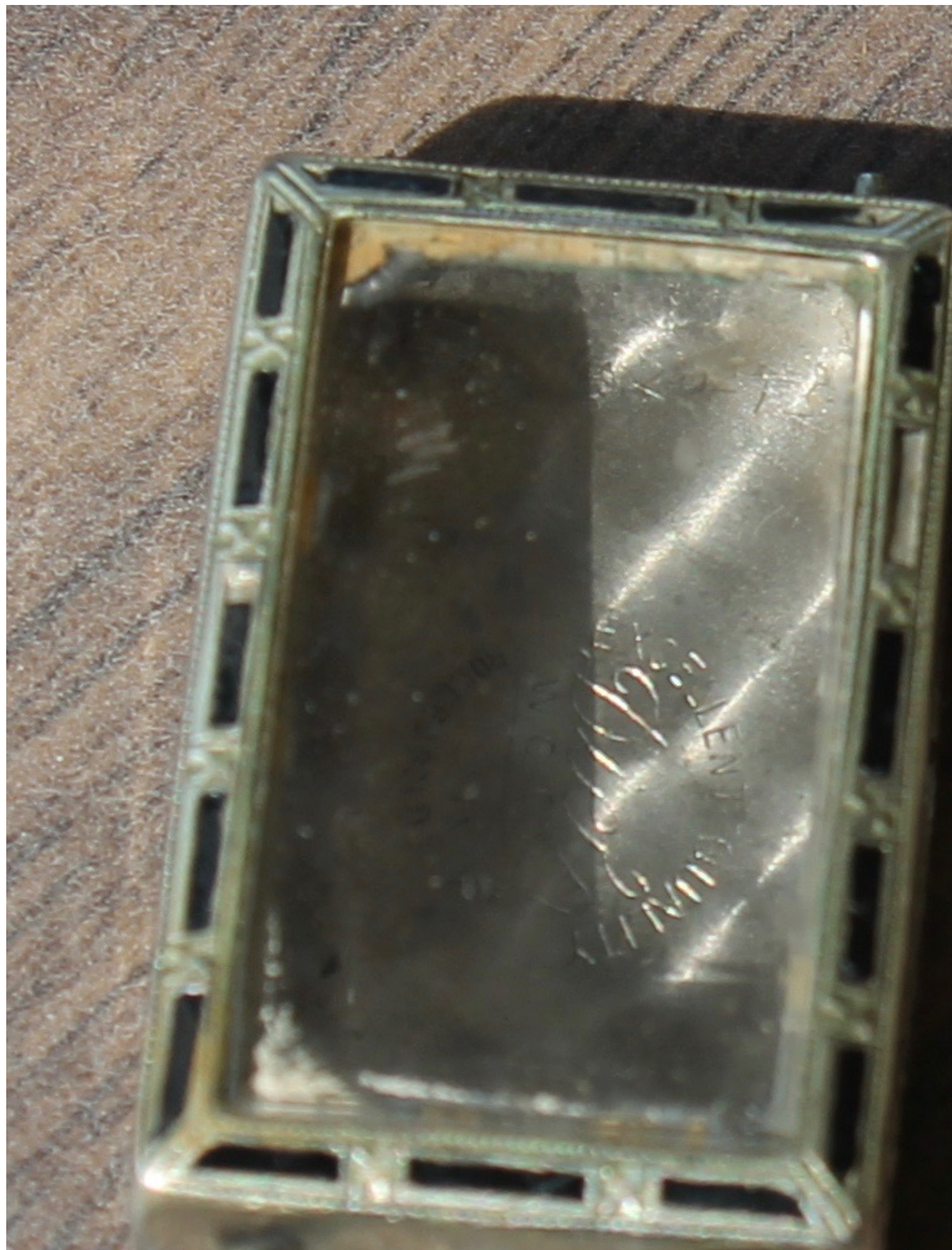


2) [IMG\\_7911.jpg](#), downloaded 1411 times



3) [IMG\\_7915.jpg](#), downloaded 1381 times





Subject: Re: Gruen Ladies Watch

Posted by [afire](#) on Mon, 22 Jul 2019 14:28:52 GMT

[View Forum Message](#) <> [Reply to Message](#)

---

These cabachon crowns were very commonly used for replacements, and crowns are a part that fairly routinely needs replacing. I don't see any reason to suspect that it came from the other watch. Very handsome watch. You see "C" instead of "K" for karat every now and then. I have no idea what the rhyme or reason is, but suspect that there must be one.

---

---

Subject: Re: Gruen Ladies Watch

Posted by [Barney Green](#) on Mon, 22 Jul 2019 16:09:36 GMT

[View Forum Message](#) <> [Reply to Message](#)

---

The reason: carat is the French and English writing, Karat the German. Depending on the expected export market K or c was preferred. As the main export market of Swiss cases in that time has been the German one most cases were marked with the K.

---