
Subject: Caliber 740 (Premo, WSC, Guild) - 17J & 19J variants

Posted by [Case](#) on Fri, 07 Feb 2020 05:20:33 GMT

[View Forum Message](#) <> [Reply to Message](#)

Size: 17L

Jewels: originally 17J, later 19J

Config: open face

Negative setting mechanism

Dial release: side screws

Dial holes: 1 & 6 positions

Maker: unknown (same maker as 750 semi-thin series)

Adjustments: 5

Here is one of the later Guild 19J variants. Stamped 740. Circa 1922. Sn 1104688. Silver dial by Zelim Jacot

Note that the 750 series semis follow this front plate number series—but a back plate sn appears on them by 1121000 (front plate). BUT the back plate # is a different series, not a shortened version of the front plate #. For example, the 758 with front plate # 1121471 bears # 16740 on the back (bridges).

File Attachments

1) [EDC77665-5B97-4C56-AE1F-2A236C30B36D.jpeg](#), downloaded 1321 times



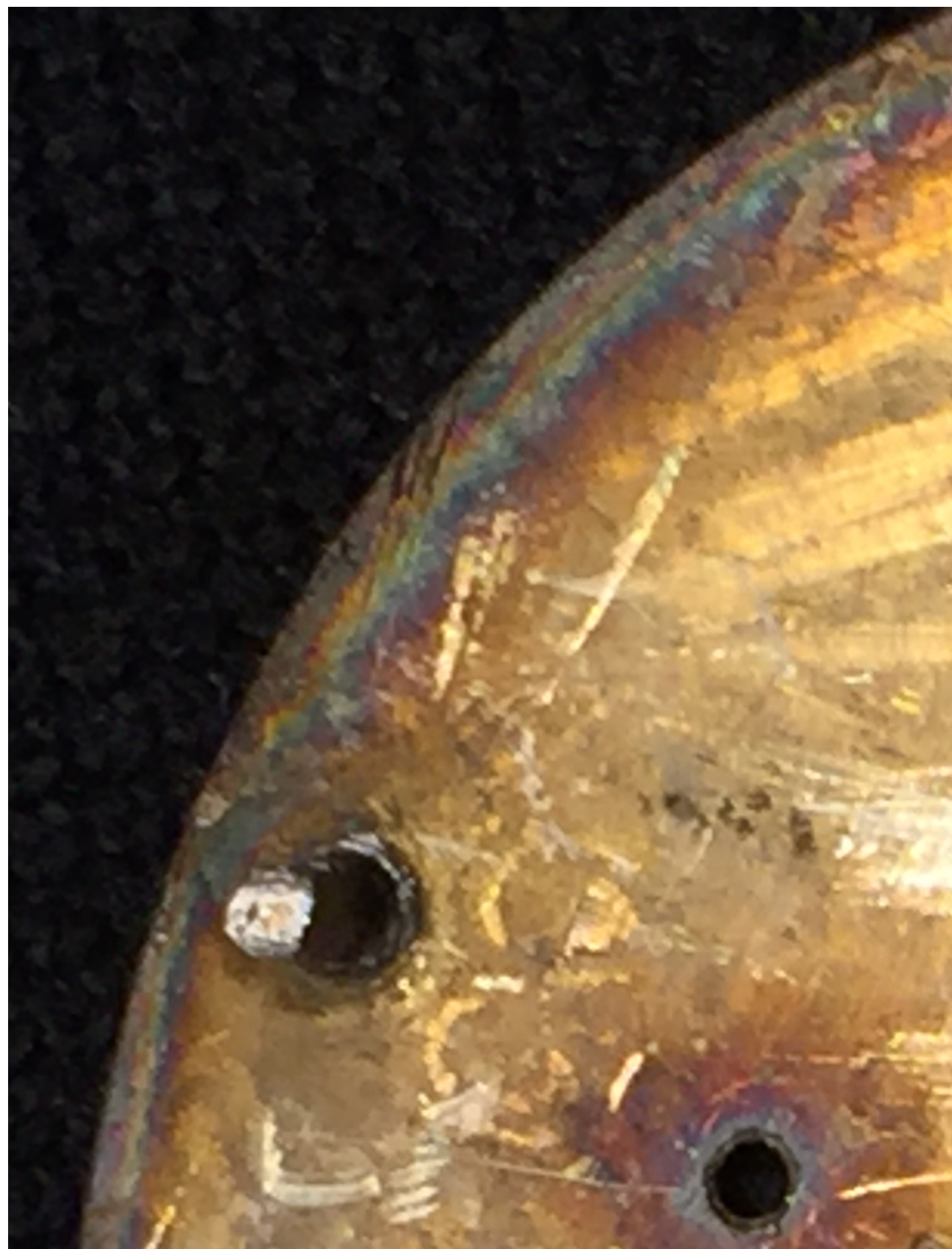
2) [D5A8F2AA-1765-448C-8329-423868747B07.jpeg](#), downloaded 1296 times



3) [20D7BED0-4F44-4092-AA0D-D90B44BCB8B1.jpeg](#), downloaded 1294 times



4) [C87A21CD-7DE5-4A3E-8836-786D3CD224ED.jpeg](#), downloaded 1293 times



5) [B334698D-CA38-42BD-891D-797C517C657E.jpeg](#), downloaded 1306 times



Subject: Re: Caliber 740 (Premo, WSC, Guild) - 17J & 19J variants

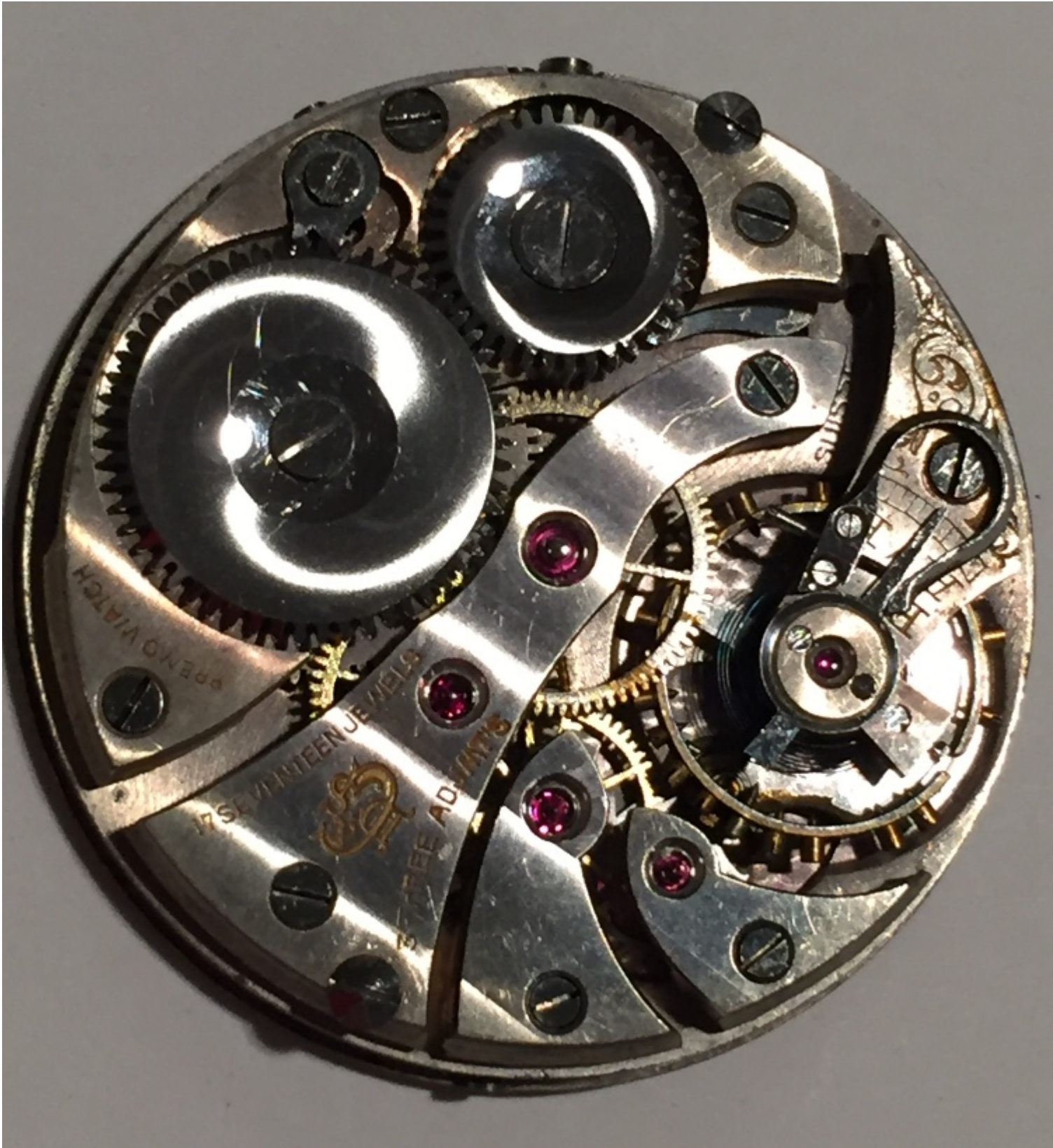
Posted by [Case](#) on Fri, 07 Feb 2020 05:44:20 GMT

[View Forum Message](#) <> [Reply to Message](#)

Here is the 17J version. Premo branded, with US patent on front plate. Sn 758821 on front plate. I think ca1915-1916.

File Attachments

1) [48D73E67-4F76-4C16-9154-BEA91C416D6B.jpeg](#), downloaded 1113 times



2) [99623772-73CC-4C7E-AC3E-C84C5D370277.jpeg](#), downloaded 1114 times



Subject: Re: Caliber 740 (Premo, WSC, Guild) - 17J & 19J variants

Posted by [Barney Green](#) on Fri, 07 Feb 2020 16:49:01 GMT

[View Forum Message](#) <> [Reply to Message](#)

Thanks for showing these, Dan!

I think Thojil has mentioned once that caliber 740 was manufactured by Lavina which I think is absolutely correct. Like a couple of models in the 7xx range...

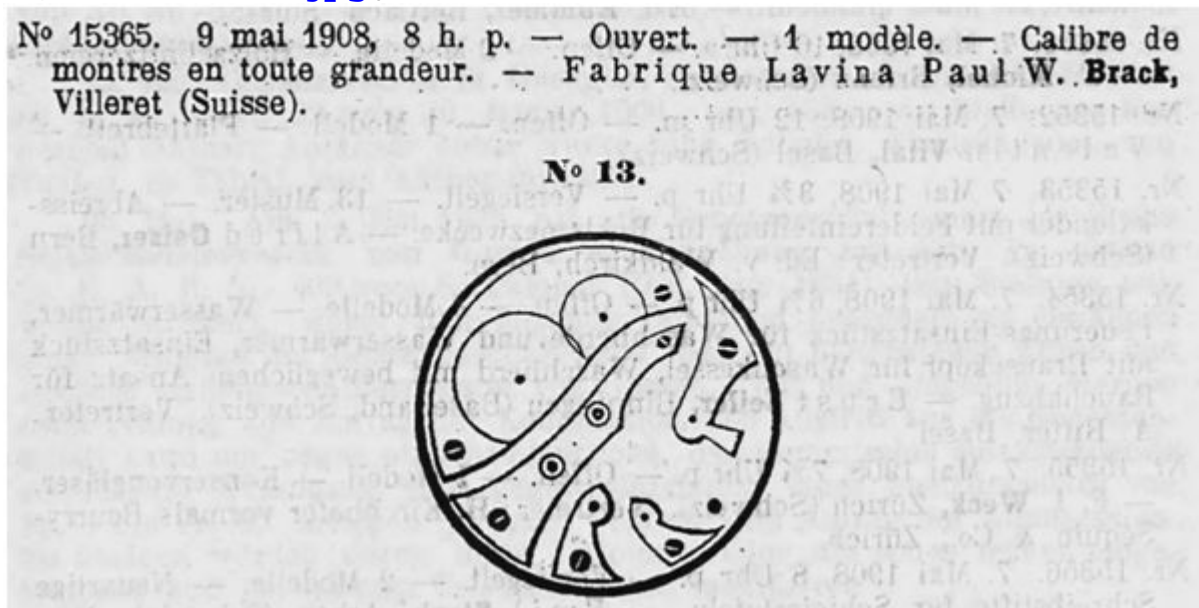
Caliber 740 is in my eyes based on this Lavina design from 1908 which has been available in different sizes:

The mentioned US Patent by Edward Staehli from 1904 shows that things does not exactly have to look like in the drawings, it is the principle which is worth the patent.

Barney

File Attachments

1) [Lavina 13.jpg](#), downloaded 1058 times



2) [US00000833489A_all_pages.pdf](#), downloaded 219 times

Subject: Re: Caliber 740 (Premo, WSC, Guild) - 17J & 19J variants

Posted by [Case](#) on Fri, 07 Feb 2020 21:46:29 GMT

[View Forum Message](#) <> [Reply to Message](#)

Excellent, Barney! Thanks for the builds. I knew I'd seen something about probable maker for these, but the inability to search numbers (a la "740") on the forum meant I couldn't locate it before posting. Thanks for also sharing the patent & design registration.

Anyone have a WSC version to share? Since the model registration expired after 8 years, we'd expect to see "Depose" disappear on the WSC ones, if this is the design in question. It certainly looks the part to me, and Depose is certainly gone by the ca1922 one above.

Subject: Re: Caliber 740 (Premo, WSC, Guild) - 17J & 19J variants

Posted by [Barney Green](#) on Fri, 07 Feb 2020 22:51:45 GMT

[View Forum Message](#) <> [Reply to Message](#)

The deposit / Depose protection expired after 5 years already if not prolonged. In this particular case it has been prolonged in 1913 and a second time in 1917 when Dubois-Peseux took over Lavina. In 1922 the protection was radiated when they did not pay the fee. This does not automatically mean that the movement has not been in production anymore, it may just be an indication that Dubois-Peseux did not fear to be copied any more.

And yes, I do have two which are WSC marked:

I dated these towards 1917 once.

Another is a 19J Gruen Guild marked which I dated towards 1921 and another 19J, Gruen Guild marked which according to the case should be 1926(?).

Barney

File Attachments

1) [740WSC2.jpg](#), downloaded 1024 times



2) [740WSC.jpg](#), downloaded 1002 times



Subject: Re: Caliber 740 (Premo, WSC, Guild) - 17J & 19J variants

Posted by [Case](#) on Sat, 08 Feb 2020 11:14:48 GMT

[View Forum Message](#) <> [Reply to Message](#)

Wow, the design protection expiring in 1922 makes an even better backstop for dating these. I'll keep looking for a dial side pic of a WSC version, to see if Depose is still stamped. I'd assume the US patent would have lapsed in 1916 and disappeared from the WSC ones.

For my education, what does the "8 h. p." on the design protection mean?

I'd assumed the 740 was phased out by 1923, after the other 754-758 became the workhorses, but that's just from my own limited data set: never seen one with a sn on the bridge or one cased after perhaps early 1923. However, I do note 758s in cases stamped

"740" from the 1923 & possibly 1924 range. So may have lingered, as you say. Would love to see some later case examples.

Btw, I assume the same maker (Lavina) would have also supplied the 750, 752 (17L) and 720, 721 (19L). Same bridge design, same front plate number series (it is the maker's, not Gruen's), same US patent stamp, at least on the Premo 721 and 750 examples I've captured front plate pics of.

Subject: Re: Caliber 740 (Premo, WSC, Guild) - 17J & 19J variants

Posted by [Barney Green](#) on Sat, 08 Feb 2020 15:05:03 GMT

[View Forum Message](#) <> [Reply to Message](#)

8 h.p. = 8PM

Yes, I have also seen a transition time with stamping not matching the actual movement for the Semithins And you are right, Lavina build a good number of pocket watch movements in the 7xx caliber number range. The ones you mentioned plus others like for example the rare 766.

I am currently hesitating to put the dials off my watches at current, would only do so if I would service them which is not planned in the next 2 to 3 years. But may be I have to some day...

Barney

Subject: Re: Caliber 740 (Premo, WSC, Guild) - 17J & 19J variants

Posted by [thesnark17](#) on Sat, 08 Feb 2020 17:29:05 GMT

[View Forum Message](#) <> [Reply to Message](#)

Given how many 75x movements appear in cases marked 740, and the relative rarity of 740 movements in 740 cases, I wonder whether Gruen placed a large case order in the late teens/early 20s and then struggled to use them up due to lower demand (maybe because everyone wanted a Verithin instead?).

I would say I've seen more 740s in cases with no caliber mark than I have seen 740s in cases marked 740.

Subject: Re: Caliber 740 (Premo, WSC, Guild) - 17J & 19J variants

Posted by [Barney Green](#) on Sat, 08 Feb 2020 17:48:48 GMT

[View Forum Message](#) <> [Reply to Message](#)

I just checked and it appears that I have a 754 and a 756 in cases marked 740.

My 740 calibers are in cases marked:

- 1) GRUEN ULTRA QUALITY 17 LIGNE EXTRA THIN Wadsworth
- 2 and 3) Wadsworth Referee WARRANTED 20 YEARS

4)GRUEN SEMI THIN ULTRA QUALITY

So you are perfectly right none of my 740s is in a case marked such and instead I have two 75x movements in 740 marked cases.

Subject: Re: Caliber 740 (Premo, WSC, Guild) - 17J & 19J variants

Posted by [Case](#) on Sun, 09 Feb 2020 05:05:51 GMT

[View Forum Message](#) <> [Reply to Message](#)

Checked US patent 833489, and the expiration date is listed as 10/16/1923. So my above statement was incorrect—and I've found an example 749 from my records to show the patent stamp remains through at least the WSC days. May mean my Guild one above is later 1923 (orphaned, so no case ref.)

WSC 740 example: front plate stamped with sn 936549 & US Pat 833489. Case is Wadsworth House # Line, Referee, not Gruen signed but stamped "740". I read case #4775606.

Other non-Gruen signed Referees I've also noted stamped "750". So the Referee cases were original issue.

Not sure that it was an overorder of 740 cases, but rather an indicator of what the case stamped caliber meant at the time. The "740" case stamp seems to be the base/original model, like the "153" stamp on early Cartouche models, denoting the spec for the movement & crystal size to fit the case design but not necessarily the actual caliber used. The early 835 cartouches all were 153-stamped cases, and some continued to be stamped 153 even after 835 case stamps come into play (close study may show a slight difference in crystal sizes/shapes).

"740" stamped in the case may have just remained the case spec reference for early semi-thin cases that were 17L, open face, and had the same crystal size as the original 740. Would explain why so many 75X semis from the early 20s have 740 case stamps.

Subject: Re: Caliber 740 (Premo, WSC, Guild) - 17J & 19J variants

Posted by [thesnark17](#) on Sun, 09 Feb 2020 15:18:27 GMT

[View Forum Message](#) <> [Reply to Message](#)

It's very possible that 740 is a spec description. You're right that this issue is general across Gruen's lines.

I concur that the Wadsworth Referee cases were original issue. I also have some with earlier calibers such as the 650 that have a caliber reference struck on that case.
