
Subject: Caliber 812 - 10''' (also shown as 9 3/4''') Aegler Rebberg
Lepine (OF)

Posted by [Case](#) on Tue, 16 Jun 2020 12:43:10 GMT

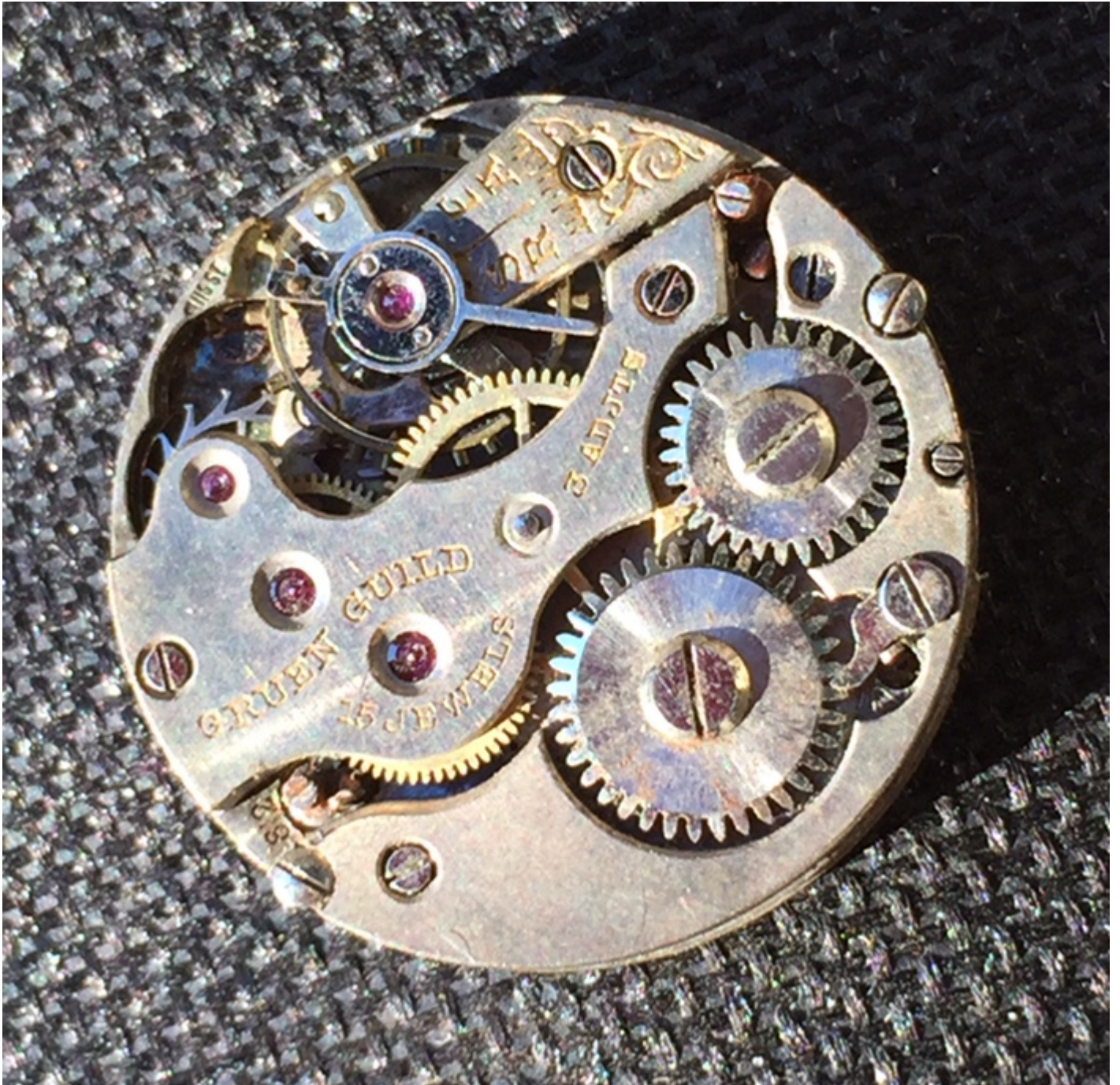
[View Forum Message](#) <> [Reply to Message](#)

This example ca late 1921 or early 1922, after Rebberg stamp disappeared.

Edit: this movement actually measures 10L. As Barney highlights below, later references (post-1926) begin referring to it as 9.75L.

File Attachments

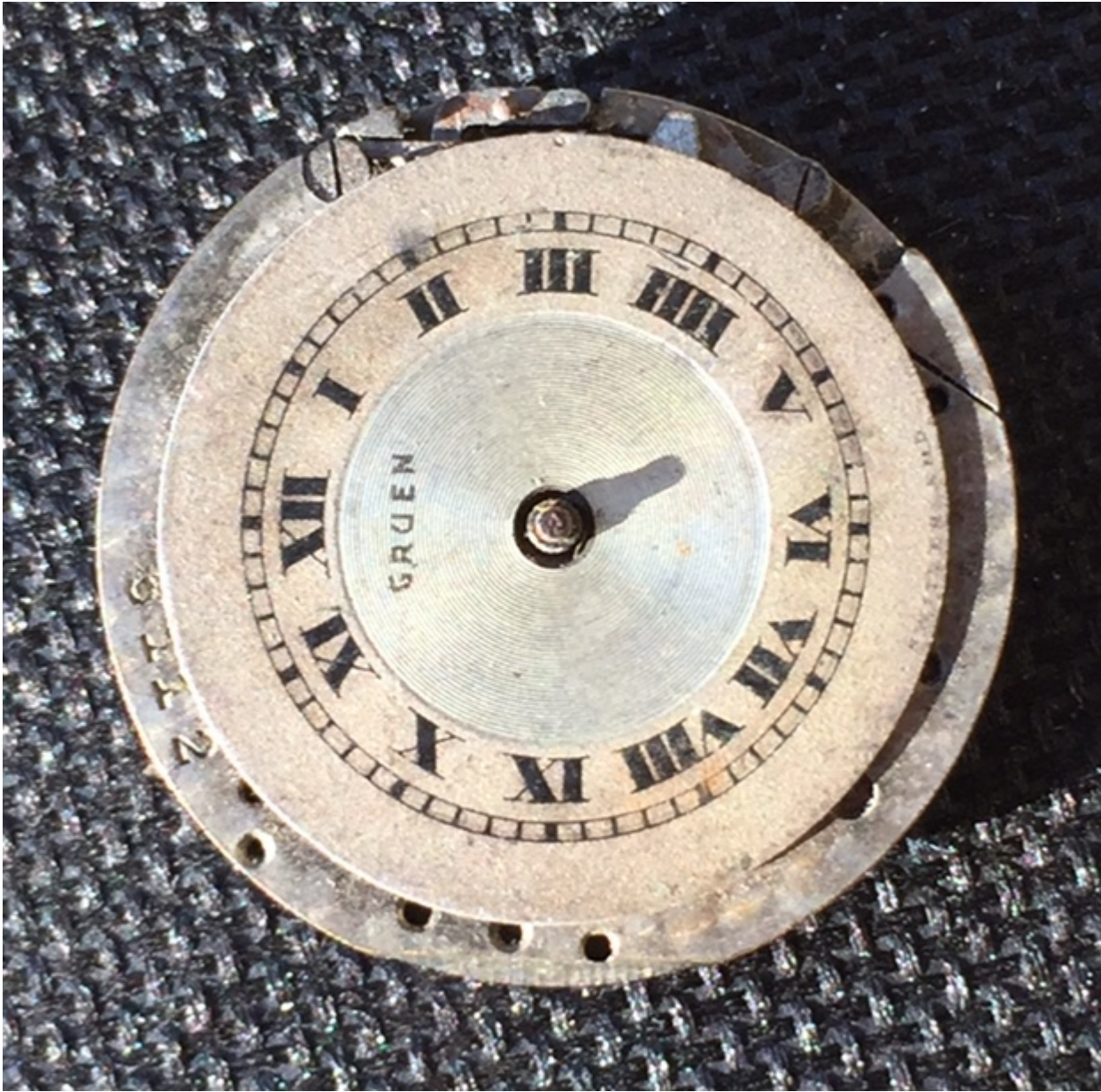
1) [D902C89E-EC60-4469-8A65-AE9F1C54F257.jpeg](#), downloaded 1084 times



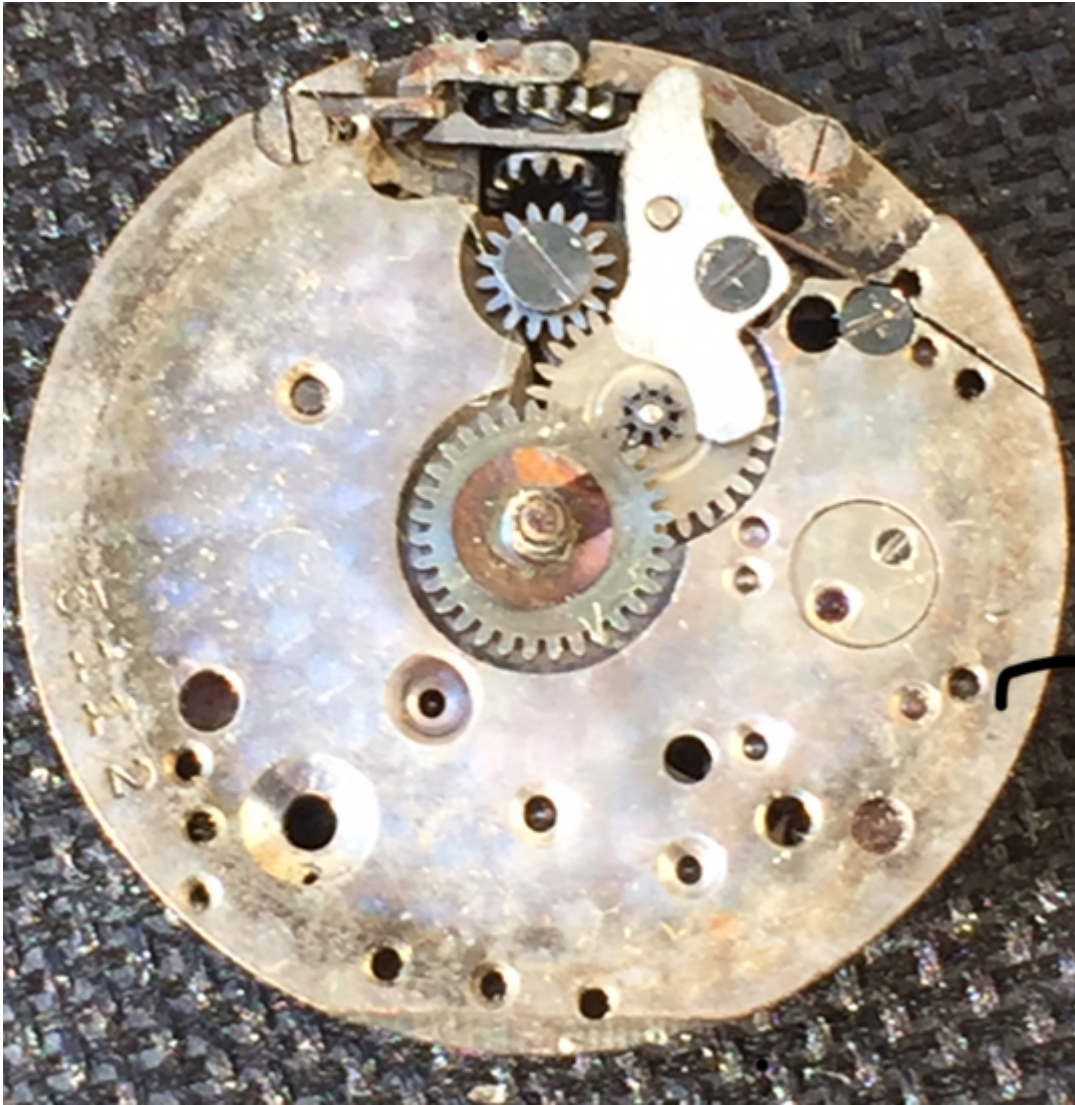
2) [7E60B918-F198-46EA-8EE6-E20F77B3EB7E.jpeg](#), downloaded 1139 times



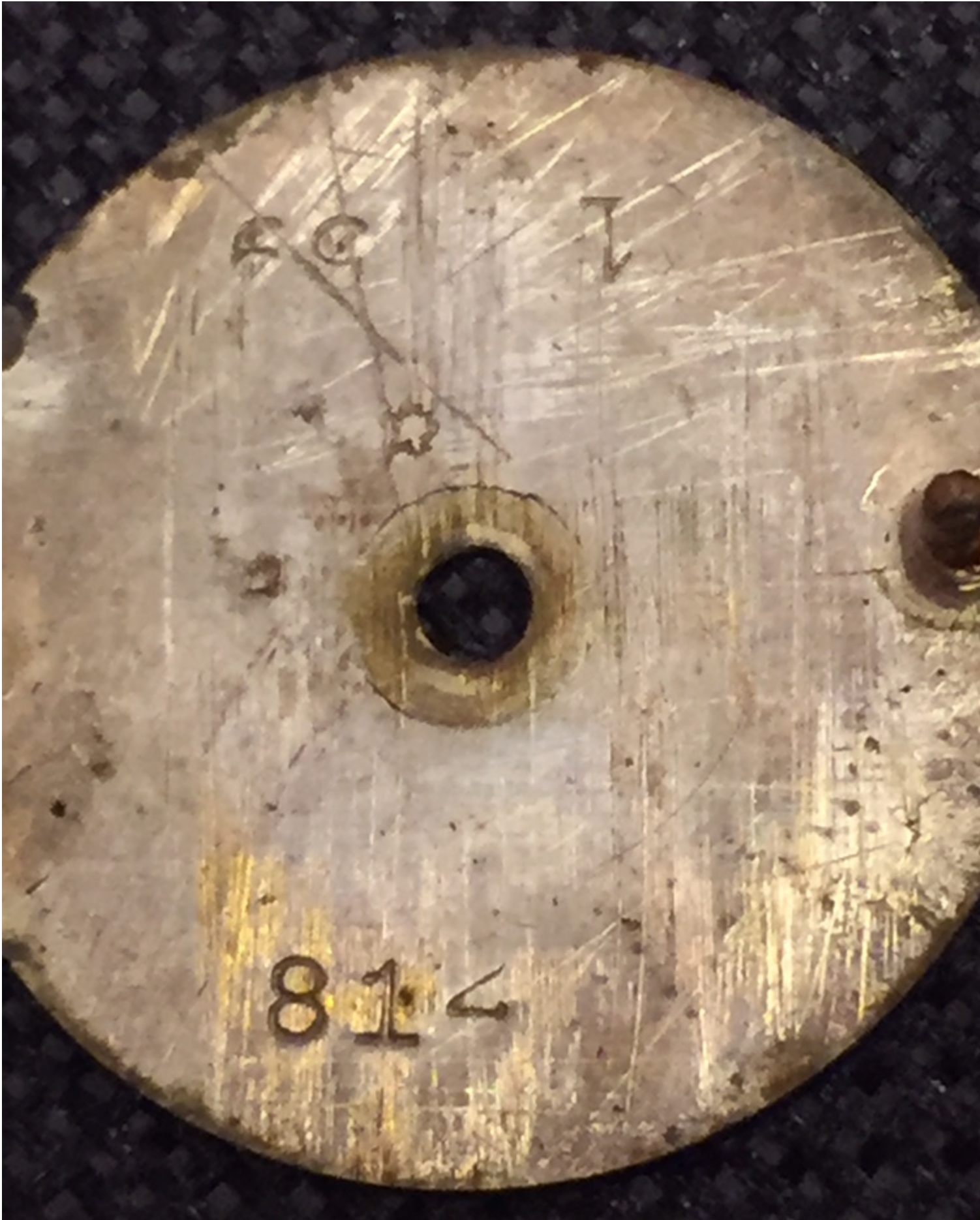
3) [38394381-3CC3-4B8C-9108-62DB140C5742.jpeg](#), downloaded 1091 times



4) [900C12C7-52BF-4788-9F0F-C0B26F411E21.jpeg](#), downloaded 1060 times



5) [40603508-421B-458D-9C12-D412B096A066.jpeg](#), downloaded 1051 times



Subject: Re: Caliber 812 - 9 3/4" Aegler Rebberg Lepine (OF)
Posted by [Case](#) on Tue, 16 Jun 2020 13:27:59 GMT
[View Forum Message](#) <> [Reply to Message](#)

WSC version of 812, with early Premo Rebberg stamp (pre-block). Circa 1916

File Attachments

1) [FC1719B4-BAD2-44E8-A4D8-C9B949AF8EED.jpeg](#), downloaded 875 times



2) [F5CE694D-5B66-4751-A012-E4E3E79C9BEC.jpeg](#), downloaded 841 times



3) [4EE2CEF3-9022-4DD3-A40C-1EF31AC45D9F.jpeg](#), downloaded 875 times



Subject: Re: Caliber 812 - 9 3/4" Aegler Rebbberg Lepine (OF)
Posted by [Case](#) on Tue, 16 Jun 2020 13:37:55 GMT
[View Forum Message](#) <> [Reply to Message](#)

812 Gruen Guarantee version, ca 1914-1916

File Attachments

1) [106EEF8D-8A69-4429-9836-901F3C9028FF.jpeg](#), downloaded 884 times



Subject: The "Lost" 10L Reberg - WSC - 15J
Posted by [Case](#) on Sun, 02 Aug 2020 18:52:12 GMT
[View Forum Message](#) <> [Reply to Message](#)

I just found this Reberg in a spares lot. It measures just proud of 22.5mm, which is right at 10 ligne. I can find no record of a Reberg in that size, but 800, 801, and 804 are missing from all my documents.

Could it be the "lost" caliber 800? Assuming 801 would be the hunter variant, per usual Aegler/Gruen convention.

File Attachments

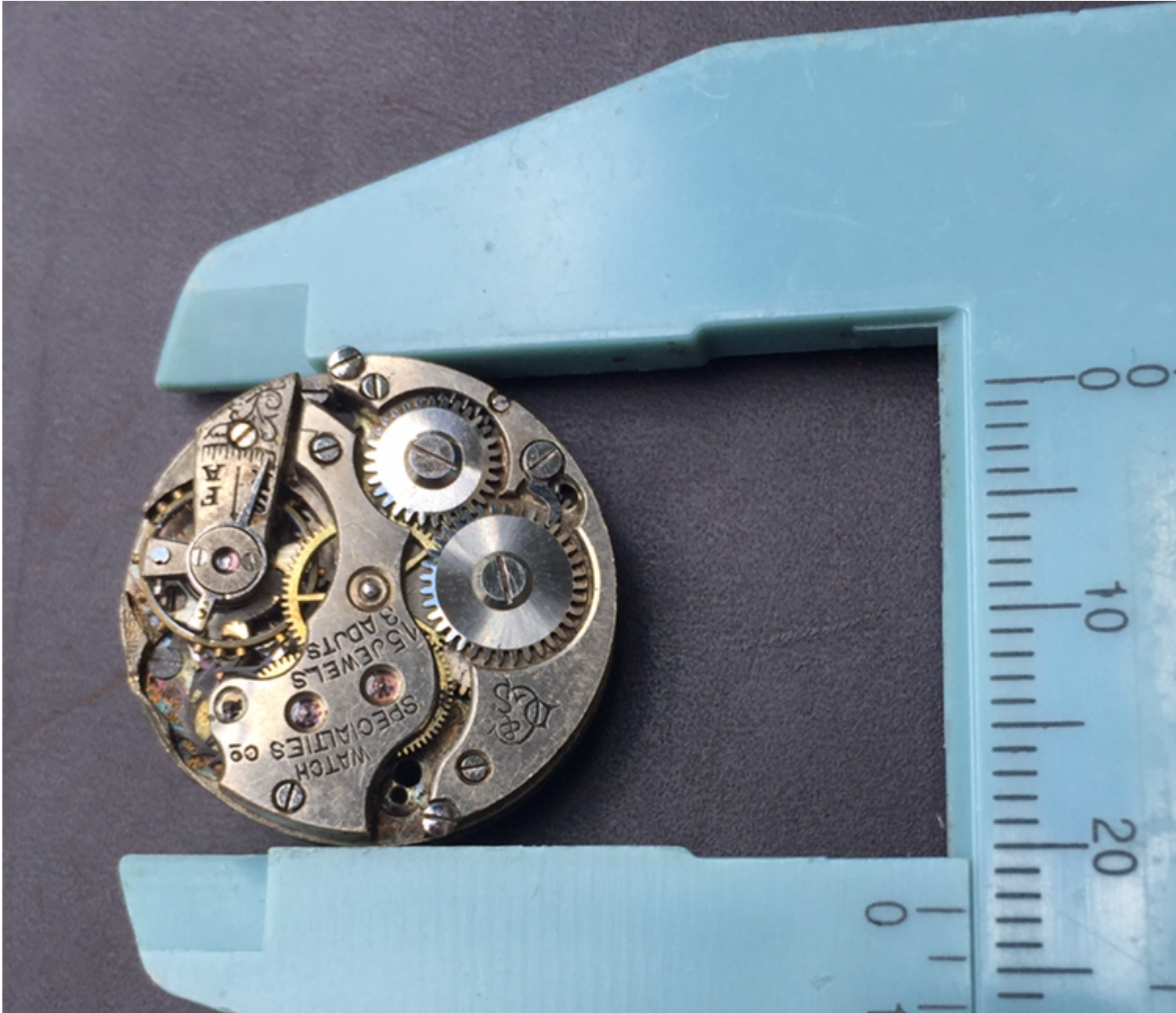
1) [C17ACC78-7CB1-46BE-BF9D-56AE7659E8CD.jpeg](#), downloaded 910 times



2) [387298A0-2CE7-49D9-A230-01054CD529F5.jpeg](#), downloaded 908 times



3) [35F3A8A0-67C8-429B-B8FA-681397024E61.jpeg](#), downloaded 893 times



Subject: Re: Caliber 800? (801) - The "Lost" 10L Reberg - WSC - 15J
Posted by [Barney Green](#) on Sun, 02 Aug 2020 19:00:30 GMT
[View Forum Message](#) <> [Reply to Message](#)

Hi Dan,

this should be a regular caliber 812/13. Some documents call it 10 ligne (like the 1921 parts catalog and 1926 supplement B), some later say 9 3/4. So I think 10 ligne is correct for caliber 812.

Barney

Subject: Re: The "Lost" 10L Rebberg - WSC - 15J
Posted by [Case](#) on Sun, 02 Aug 2020 19:08:08 GMT
[View Forum Message](#) <> [Reply to Message](#)

Thanks, Bernd. Edit: I think you are correct. I just found the Guild 812 I posted recently (stamped 812 on movement and on dial back). It also measures 22.5mm—10L, not 9.75L.

Anyway, I've updated the title to remove 800/801, as I also note 810/811 are unidentified. It seems Aegler had a Rebberg in most sizes, so I wouldn't be surprised if the 9.75 & 10 ligne were each different calibers. We shall see if more comes to light.

Subject: Re: The "Lost" 10L Rebberg - WSC - 15J
Posted by [Case](#) on Sun, 02 Aug 2020 19:19:49 GMT
[View Forum Message](#) <> [Reply to Message](#)

I also merged this thread under the 812.

Subject: Re: The "Lost" 10L Rebberg - WSC - 15J
Posted by [timeliz](#) on Sun, 02 Aug 2020 19:28:07 GMT
[View Forum Message](#) <> [Reply to Message](#)

Def 812/813 movement...

+ other iterations...

File Attachments

1) [Gruen 812s mov.jpg](#), downloaded 850 times



2) [Gruen 812-813 tile.jpg](#), downloaded 894 times



3) [Gruen cal 813 mov & hallmarks.jpg](#), downloaded 888 times



503717
813

Subject: Re: The "Lost" 10L Reberg - WSC - 15J
Posted by [Case](#) on Sun, 02 Aug 2020 19:43:29 GMT
[View Forum Message](#) <> [Reply to Message](#)

Yep, for sure. Some nice examples and very nice bling there btw, Liz!

I guess I'm just saying I'm open to the possibility of a true 9.75L Reberg popping up, since 810/811 are unknown & surrounded by myriad Reberg sizes.
