

---

Subject: Wristlet XXIX

Posted by [Jenneke](#) on Fri, 07 Aug 2020 13:06:54 GMT

[View Forum Message](#) <> [Reply to Message](#)

---

Model name : XXIX

Type : Wristlet

Period/date : 1921

Gender : ladies

Case Maker : Wadsworth

Case Material : Ultra Quality Gold filled

Case Serial : 677382

Case Style no :

Caliber : 98/99 (9 3/4 Ligne, 4 adj 15 jewels)

Movement Maker :

Movement Serial: -

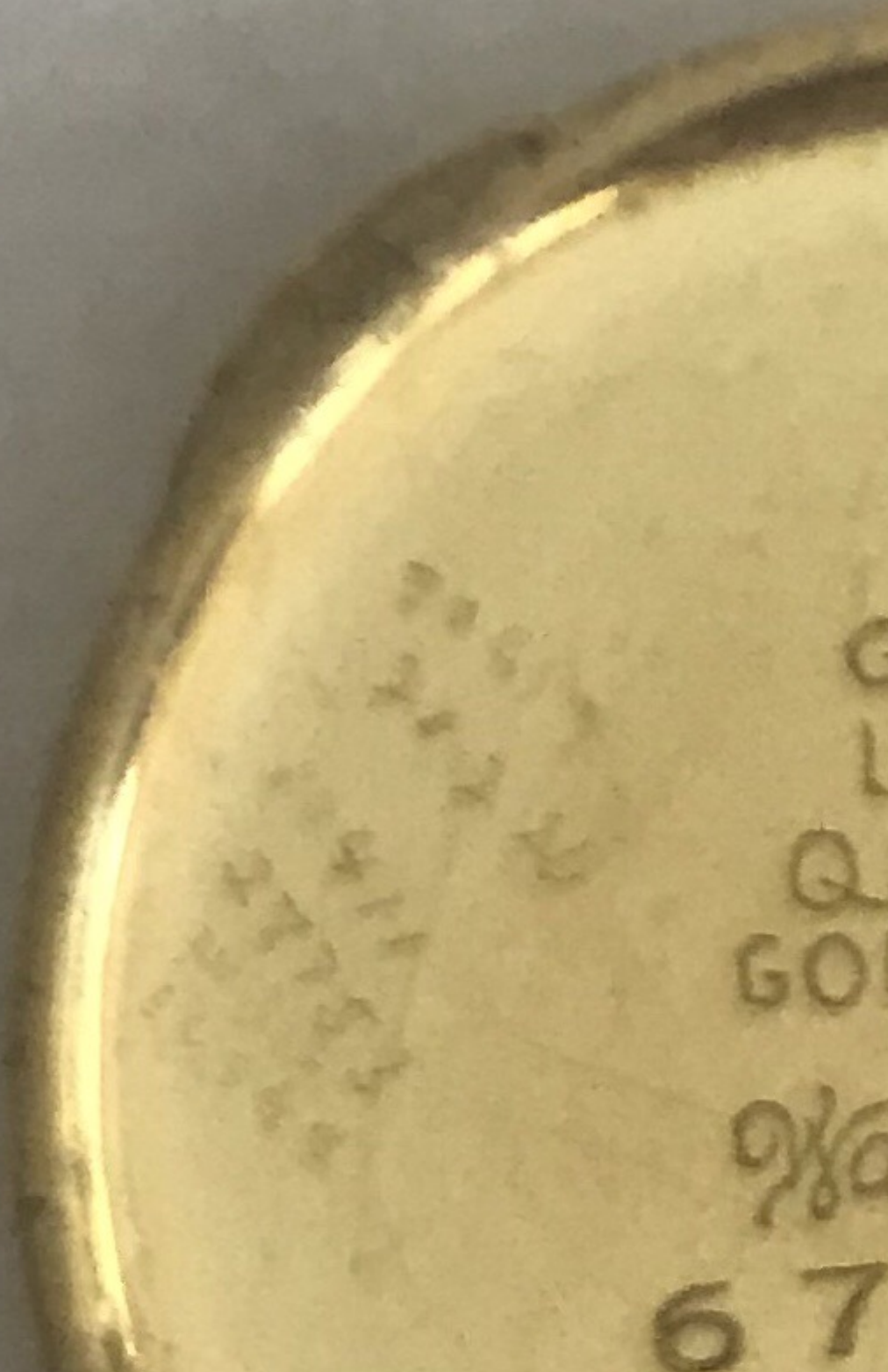
Bracelet : None

Other info : 15 repair marks inside the case back. Someone loved it. Could this be a silk ribbon wristlet XXIX R723 from the 1917 book? But it is not 25yr gold filled...

---

### File Attachments

1) [D015073A-7844-4FF2-BEF9-51FB3446F3BD.jpeg](#), downloaded 1308 times



1951

G  
L  
Q  
GOL  
9/10

67

2) [D49E76E2-7F27-4335-951B-E3E40E932CE4.jpeg](#), downloaded 1292 times



3) [94FD79B6-1E6C-4B52-A1E7-60B0BA483041.jpeg](#), downloaded 1257 times



Subject: Re: Unknown wristlet  
Posted by [Barney Green](#) on Fri, 07 Aug 2020 13:22:14 GMT  
[View Forum Message](#) <> [Reply to Message](#)

---

Nice, Jennecke.

I think that the Wadsworth case number would put the watch towards 1921, right between the 1918 Worthy-Book and the 1922 start Masterbook. At this time Ultra Quality has replaced the 25 year marking...

---

---

Subject: Re: Unknown wristlet  
Posted by [Jenneke](#) on Fri, 07 Aug 2020 17:08:24 GMT  
[View Forum Message](#) <> [Reply to Message](#)

---

In fact, the dial is yellow gold combined with silver color. The plastic glass is yellowed. :d  
Houston, we've got a problem. It popped out. Can I use super glue?

The number, well, difficult. Starts with 8 (or 6), ends with 546 and something inbetween.

#### File Attachments

1) [FC25DB3A-5CC0-466C-BF15-0E121D6354EF.jpeg](#), downloaded 1048 times

---





Subject: Re: Unknown wristlet  
Posted by [Gary](#) on Fri, 07 Aug 2020 17:28:08 GMT  
[View Forum Message](#) <> [Reply to Message](#)

---

Jenneke: Houston, we've got a problem!  
Elon: Hold my beer, we'll send you some glue.

&feature=youtu.be[/youtube]

I use crystal cement If super glue dries clear you could try a dab.

---

---

Subject: Re: Unknown wristlet  
Posted by [Jenneke](#) on Wed, 12 May 2021 18:46:49 GMT  
[View Forum Message](#) <> [Reply to Message](#)

---

It took a while... but I fixed it.

First polywatch to try to remove the yellow color. Made my first mistake... rubbing with a paper towel makes the plastic cloudy. Fixed that with Brasso and a cotton cloth.

Crystal cement got it fixed in the bezel. And a cotton swap and wooden stick was usefull for my glue spill :roll:

#### File Attachments

1) [0E92EBC7-D35E-4521-AF96-412C02521FC9.jpeg](#), downloaded 875 times

