
Subject: Gruen Lady Pocket / Pendant watch by Georgine Pau

Posted by [Case](#) on Thu, 01 Jul 2021 14:11:45 GMT

[View Forum Message](#) <> [Reply to Message](#)

Here's one for the ladies!

Model name: unknown

Type: pocket/pendant

Period/date: 1916-1921

Gender: Lady

Case Maker: Madame Georgine Pau, Geneve

Case Material: 935 "extra" Sterling

Case Serial: 40

Case Style no: n/a

Caliber: 611 or 610, with sub-seconds

Movement Maker: Watch Specialties

Movement Serial: 29347 (or 29 347)

Bracelet: n/a

Other info: The watch measures about 1 1/8" across. Case signed "Watch Specialties Co.", matching movement. Dial back stamped "46." It appears to have had something around the outside (possibly a decorative wrap of gold?) which was held with two screws through the case. It has a hinged top & a metal insert to hold the movement that is stamped with the case number.

File Attachments

1) [IMG_6433.JPG](#), downloaded 1707 times



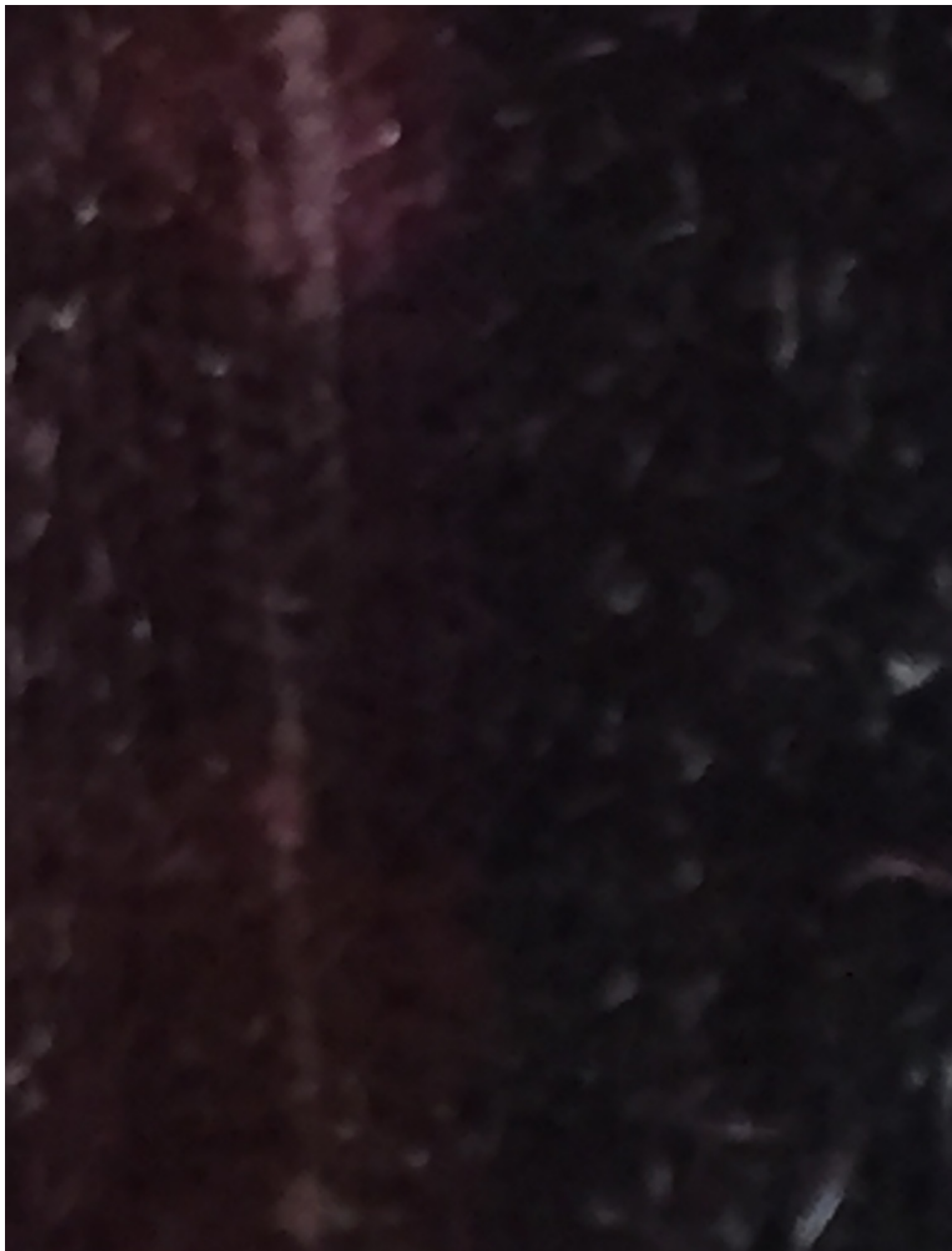
2) [IMG_6434.JPG](#), downloaded 1686 times



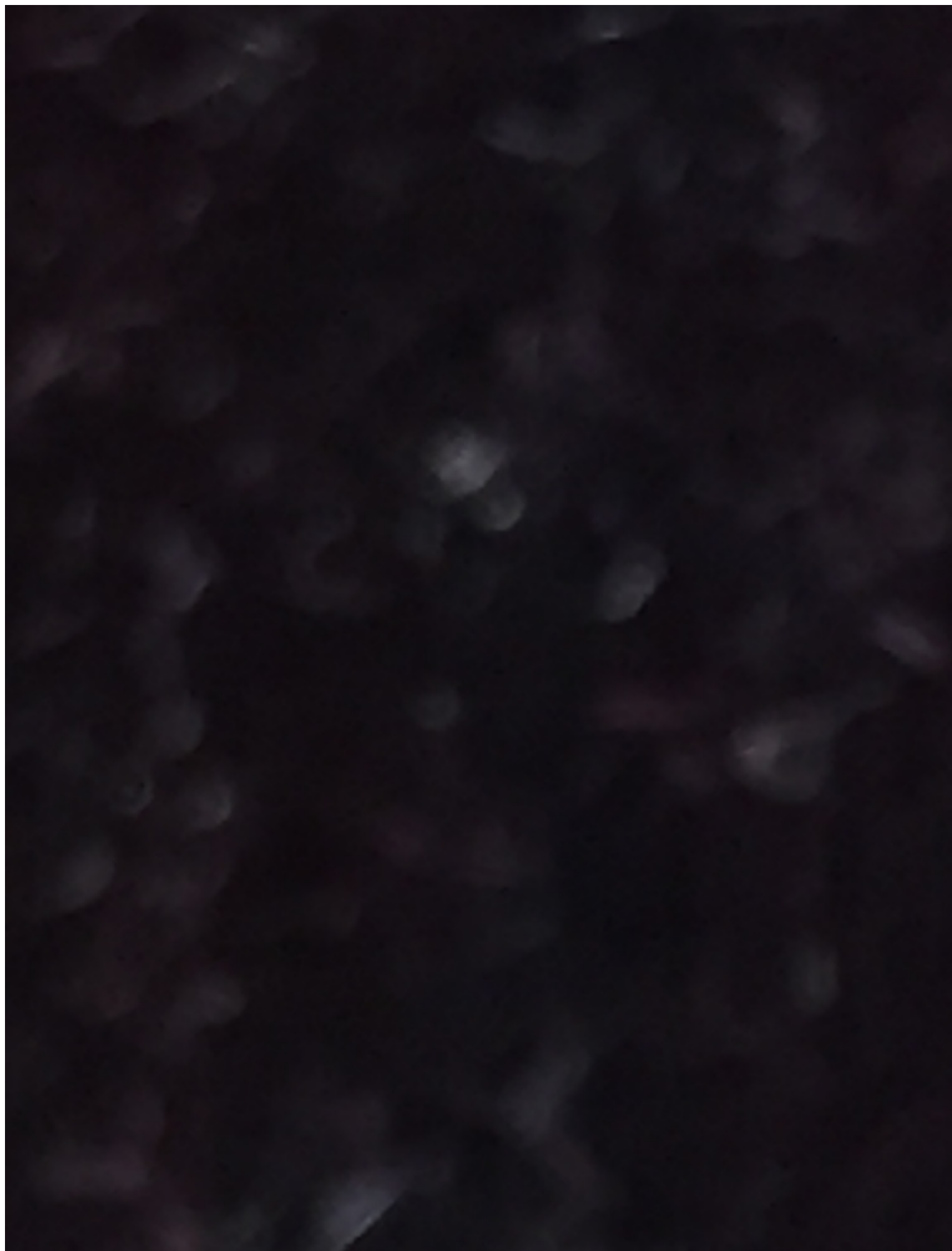
3) [IMG_6435.JPG](#), downloaded 1685 times



4) [IMG_6436.JPG](#), downloaded 1715 times



5) [IMG_6443.JPG](#), downloaded 1704 times



6) [IMG_6450.JPG](#), downloaded 1673 times



7) [IMG_6452.JPG](#), downloaded 1673 times



8) [C13B8E8F-AC0A-44C0-B64A-B32BB762B65E.jpeg](#), downloaded 1609 times



9) [4F4D0D39-E503-4F05-88A8-5F10F0F828DB.jpeg](#), downloaded 1603 times



Subject: Re: Gruen Lady Pocket / Pendant watch by Georgine Pau

Posted by [Case](#) on Thu, 01 Jul 2021 14:13:52 GMT

[View Forum Message](#) <> [Reply to Message](#)

A big thanks to Barney and Ephemerald for helping me look into Mdm Pau's history. No sign of an ad for this watch so far. It seems to be a custom piece, and functionally it is like an early

ancestor of the lady's Carre. I got excited when I saw a link recently to a Carre with a Caliber 610 in it, although probably a swap. I have been watching for a dial & crystal to begin restoration.

Subject: Re: Gruen Lady Pocket / Pendant watch by Georgine Pau

Posted by [Jenneke](#) on Thu, 01 Jul 2021 17:25:21 GMT

[View Forum Message](#) <> [Reply to Message](#)

Interesting one. Do you think this was a travel clock? Something like this (non Gruen internet photo for educational purposes):

What intrigues me is that one of the holes is opposite to the winding stem. Is that for a screw or could you flip the movement upside down (nurse brooch) and is that hole for the stem.

That second little hole. Does that go through the case? Some older pw movements (not sure for Gruen) have a little pusher. For setting the time. Or.. to get the movement "loose" from the case.

File Attachments

1) [F775EB80-47F8-4408-8D66-0551688E2EE4.jpeg](#), downloaded 1360 times



Subject: Re: Gruen Lady Pocket / Pendant watch by Georgine Pau

Posted by [afire](#) on Fri, 02 Jul 2021 18:06:34 GMT

[View Forum Message](#) <> [Reply to Message](#)

I'm in no way doubting you, but what makes the Pau connection? If there's no ad, and you didn't mention a marking, is there something else I'm missing?

Subject: Re: Gruen Lady Pocket / Pendant watch by Georgine Pau

Posted by [Case](#) on Sat, 03 Jul 2021 02:59:54 GMT

[View Forum Message](#) <> [Reply to Message](#)

Sorry, afire, two images were too big, so I finally had time to resize & just reposted. Now you can see her GPG mark in the caseback.

Jenneke—honestly, I bought it in a lot of watches, because I'd no idea what it was. I've never seen anything quite like it in the Gruen arsenal. It does seem more of a purse clock, maybe too heavy to be worn around the neck. But the nurses watch is an interesting thought.

Here are pics of the inner movement holder left & right edges. The holes all go through the case on left and right: a stem hole, with a smaller screw hole that threads only on the case (small indent on inner holder); and a single large hole opposite the stem for a screw that anchors into the inner holder. It does seem like the movement could be reversed (12 opposite the bow), although the stem hole seems bigger. That could possibly make it adaptable to a nurses pendant.

File Attachments

1) [A212F462-3D8C-421C-87E5-CEF23DBDCE2A.jpeg](#), downloaded 1346 times



2) [6712EBE6-2FB6-458C-8B6B-E0DC02918F42.jpeg](#), downloaded 1364 times

