
Subject: Gruen Pilgrim

Posted by [edteach](#) on Sun, 02 Jan 2022 15:07:31 GMT

[View Forum Message](#) <> [Reply to Message](#)

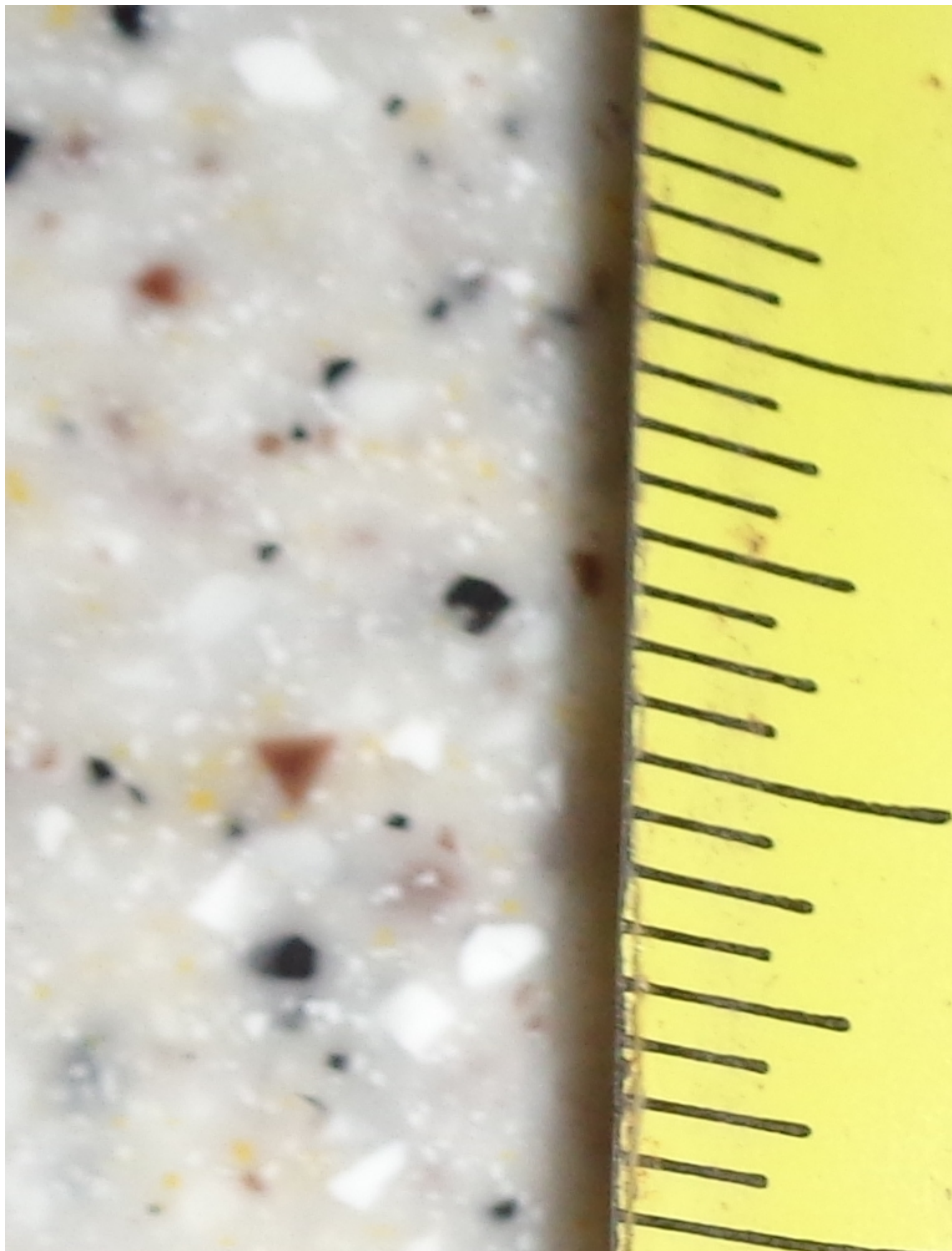
I bought a bag of watches at a flea market cheap. This one works. Seems to run good. I am checking if it keeps time or needs to be adjusted but it runs so I would assume at worst it needs a cleaning and time adjust. But I can not find out what model this is and if there is any value. Thanks for any help.

File Attachments

1) [1.JPG](#), downloaded 1894 times



2) [DSC07072.JPG](#), downloaded 1967 times



3) [DSC07073.JPG](#), downloaded 1944 times



4) [DSC07074.JPG](#), downloaded 2033 times



Subject: Re: Picked up at a flea market, what model?
Posted by [Jenneke](#) on Sun, 02 Jan 2022 17:23:38 GMT
[View Forum Message](#) <> [Reply to Message](#)

Normally I would say, open the case back and make pictures of the movement and the inside of the case back. That would give us more info. But there is radium on the dial and hands.

I havent seen this case shape before. The movement is a veri-thin and its from somewhere in the period 1939-1955. Value for these ladies watches is very low as they are gold filled.

Hope others chime in!

Subject: Re: Picked up at a flea market, what model?
Posted by [edteach](#) on Sun, 02 Jan 2022 19:27:04 GMT
[View Forum Message](#) <> [Reply to Message](#)

I don't think its GF. If you look at the back of the case there is a thin stamped gold case over the steel or brass case. I took the back off and it has service dates scrached in the back. 56 57 and 80.

File Attachments

1) [DSC07101.JPG](#), downloaded 1123 times



2) [DSC07102.JPG](#), downloaded 1097 times

D2-556B4

LS-8716 - S-10180
984 R

SS 16

C 2.7.08.00

3) [DSC07103.JPG](#), downloaded 1088 times



4) [DSC07104.JPG](#), downloaded 1086 times



5) [DSC07105.JPG](#), downloaded 1104 times

2-5

9804 R
9-28-57

6) [DSC07106.JPG](#), downloaded 1089 times

2-9-6

~~48.5 R~~
42.5-5

0708

7) [DSC07107.JPG](#), downloaded 1087 times



Subject: Re: Picked up at a flea market, what model?
Posted by [edteach](#) on Sun, 02 Jan 2022 19:36:13 GMT
[View Forum Message](#) <> [Reply to Message](#)

Back of the case showing the gold stamped sheet.

File Attachments

1) [2.JPG](#), downloaded 1125 times



2) [3.JPG](#), downloaded 1148 times



Subject: Re: Picked up at a flea market, what model?
Posted by [Jenneke](#) on Sun, 02 Jan 2022 19:44:20 GMT
[View Forum Message](#) <> [Reply to Message](#)

It could be service dates, or codes from the watchmaker what was done.

I cant read what is on the outside of the case back. Probably the case material and the brand and/or case maker. I wonder if this is a marriage because inside the case something is crossed out before SS (sweep second) and I dont see Gruen on the case.

The movement looks like a caliber 215SS (should be the number under the wheel) with seventeen jewels that started in 1948.

Could also be rolled gold. Thin layer. No gold scrap value anyway.

Subject: Re: Picked up at a flea market, what model?
Posted by [Ephemerald](#) on Sun, 02 Jan 2022 19:47:45 GMT
[View Forum Message](#) <> [Reply to Message](#)

Hi, welcome. In the Gruen catalog this is wristlet model "WR 766". Its listed as having movement calibre 215ss. It was available in gold and gold filled. Jennekes correct, this is certainly the gold filled option, with a steel caseback.

Subject: Re: Picked up at a flea market, what model?
Posted by [edteach](#) on Sun, 02 Jan 2022 19:48:33 GMT
[View Forum Message](#) <> [Reply to Message](#)

I found my digital microscope and took some close ups of the gold cap.

File Attachments

1) [Sun Jan 02 13-42-08.jpg](#), downloaded 1162 times



2) [Sun Jan 02 13-45-33.jpg](#), downloaded 1175 times



Subject: Re: Picked up at a flea market, what model?
Posted by [edteach](#) on Sun, 02 Jan 2022 19:52:42 GMT

[View Forum Message](#) <> [Reply to Message](#)

The back of the case says the Gruen and steel back, The gold I don't think it is plate. There is a thin plate that is stamped the case cover out of. I am sure its not a great amount of gold but I don't think its plate. I am positive the scratches are service dates. 2-9-56 *-28-57 5-10-80

Subject: Re: Picked up at a flea market, what model?
Posted by [Barney Green](#) on Sun, 02 Jan 2022 20:33:57 GMT

[View Forum Message](#) <> [Reply to Message](#)

This is the Gruen Pilgrim from 1952. It definitely is gold plated, a relatively rare model. Original price was \$49.75, today watches like this are close to worthless, sorry, but there is no market for these ladies watches.

Barney

File Attachments

1) [Pilgrim.JPG](#), downloaded 1449 times



Subject: Re: Picked up at a flea market, what model?
Posted by [edteach](#) on Sun, 02 Jan 2022 21:34:33 GMT
[View Forum Message](#) <> [Reply to Message](#)

I have about 4 dollars into it and it works so I am sure its worth more than that.

Subject: Re: Picked up at a flea market, what model?
Posted by [Barney Green](#) on Sun, 02 Jan 2022 21:35:46 GMT
[View Forum Message](#) <> [Reply to Message](#)

I agree, it is worth more than that, but if you try to sell it you would not get much more I fear.

Subject: Re: Picked up at a flea market, what model?
Posted by [edteach](#) on Sun, 02 Jan 2022 22:04:24 GMT
[View Forum Message](#) <> [Reply to Message](#)

I bought a bag of watches at a flea market one was a Womens Seiko gold color watch that is quartz, new battery and a few links I took out and my wife loves it. This one and it works and

keeps time. The other three are a Timex Works then stops mechanical movement, Bulova, liberty. Nothing of real value but I will try to sell the lot for the 2 bucks I have into the 5 watches. I will sell them for repair or parts.
