
Subject: Blue paper Watch glasses box
Posted by [Jenneke](#) on Fri, 22 Mar 2024 16:13:07 GMT
[View Forum Message](#) <> [Reply to Message](#)

Description

A dark blue paper box for Gruen double Lentile watch glasses. Assortment AL1 and AL2?
Contained 2 times 1 gross (=12x12) glasses.

Period: 1916-1920?

Watch type: for Ladies' and Gentlemen's Wrist Watches

Size: width 17cm, depth 7 cm and height 3cm

Inventor:

Patents: for the Double Lentille trademark 12th may 1916

Box maker: unknown

Crystal maker: unknown Swiss

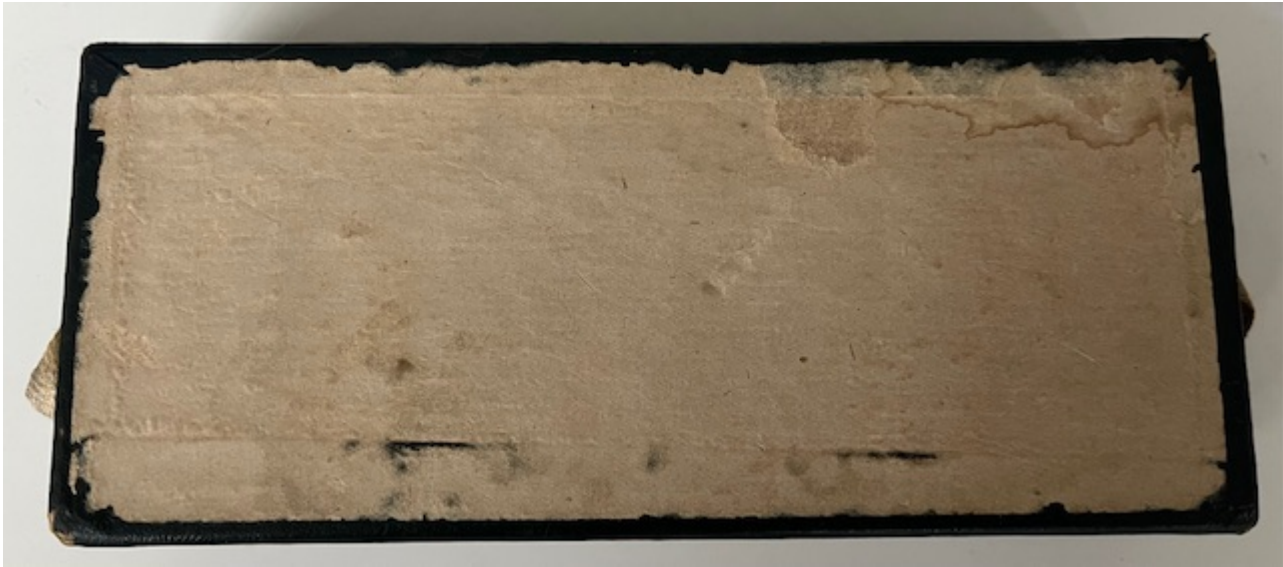
Box seller: F.J. Boesse&Co, 68 Nassau street, New York

File Attachments

1) [IMG_0943.jpeg](#), downloaded 941 times



2) [IMG_0944.jpeg](#), downloaded 931 times



3) [IMG_0945.jpeg](#), downloaded 936 times



4) [IMG_0946.jpeg](#), downloaded 929 times



Subject: Re: Blue paper Watch glasses box
Posted by [Jenneke](#) on Fri, 22 Mar 2024 16:22:05 GMT
[View Forum Message](#) <> [Reply to Message](#)

The dating is done by looking carefully at the text. In the 1921 Standardized parts they talk about "Gruen double Lentile Crystals". In the 1917 blue book they mention "gruen double Lentile glasses". First mentioning on these glasses was in jewelers circular in 1916:

Two different gross cabinets could be ordered, AL1 for mens, AL2 for ladies. This box contained both.

The glasses have the trademark label, but with Lentile and not double II Lentille. And some have a swiss label.

Have a look at this topic for more info:

https://vintagegruen.org/vgforum/index.php?t=msg&goto=15098&&srch=Lentille#msg_15098

File Attachments

1) [IMG_8256.jpeg](#), downloaded 500 times

"Let the hands pass freely"

BY USING THE LENTILE GLASS WITH THE DOUBLE CURVE

REGULAR LENTILE



Where the hands rub on the lentile glass. The hand that slips through and should never be used on any watch this model or small ladies' watches.

DOUBLE LENTILE



Here is the double curve at the outer edge, which is "Let the hands pass freely" without using any higher glass.

GRUEN Double Lenticle GLASSES

GRUEN "Double Lenticle" glasses are accurately gauged and of less height than the ordinary lenticle glass, yet the double curve at the outer edge "Let the hands pass freely." Watchmakers know the difficulties they encounter and their time consumed to regulate watches on account of improper shaped glasses. We had this special ground glass made, not to get into the glass business, but to render a service to insure satisfaction in our watches by having these proper glasses used. That dealers can stock and use these glasses generally for all makes of watches, we have made the price the same as the ordinary lenticle—namely: \$1.25 per dozen or \$12.00 per gross—with a cabinet box.

MADE IN ALL SIZES FROM 5^{1/2} to 12^{1/2} is—16^{1/2} is to 19^{1/2} is

AL 1—our 1 gross assorted double lenticle will fit 80 per cent. of men's 12 size watches. AL 2—our 1 gross assorted double lenticle for ladies' chateaux and wristlet watches, these glasses will fit 90 per cent. of the smaller timepieces. Its economy and service.

Order Chart for GRUEN "Double Lenticle" Glasses

	NUMBER	5	6	7	8	9	10	11	12	13	14	15	16	17	18	19
W R I S T L E T S I Z E S	" " 6															
	" " 7															
	" " 8															
	" " 9															
N I T S I Z E S	" " 10															
	" " 11															
JEWEL, LADY VERITHIN and O S I Z E S	" " 12															
	" " 13															
- M E N ' S S I Z E S -	" " 16															
	" " 17															
	" " 18															
	" " 19															

Mark quantity of each size desired in above squares

AL 1—Is a cabinet of 1 gross assorted men's sizes.

AL 2—Is a cabinet of 1 gross assorted ladies' sizes

Mail Coupon Below

Check assortment you desire; mail to us with your name and address and same will be sent you subject to your approval. If not satisfactory, can return. Mail coupon to-day, for 1 gross each, assorted, of the ladies' and men's Gruen "Double Lenticle" glasses. Once you use these, no others will do.

Gruen National Watch Case Company

31 E. Fifth Avenue

CINCINNATI, OHIO

Name _____
 Addr. _____
 Gruen N.W.C. Co. Kindly send assortment of glasses checked below.
 AL 1 _____
 AL 2 _____

2) IMG_0948.jpeg, downloaded 500 times



3) [IMG_0950.jpeg](#), downloaded 495 times

