
Subject: Ladies Wrist Watch -Cartouche 377
Posted by [erin.marie](#) on Wed, 22 Jan 2014 23:20:04 GMT
[View Forum Message](#) <> [Reply to Message](#)

Model name : Cartouche 377
Type : Wrist Watch
Period/date : 1920's
Gender : Ladies

Case Maker : Gruen Cincinnati
Case Material : 14K Solid Gold
Case Serial : 1254052
Case Style no : ?

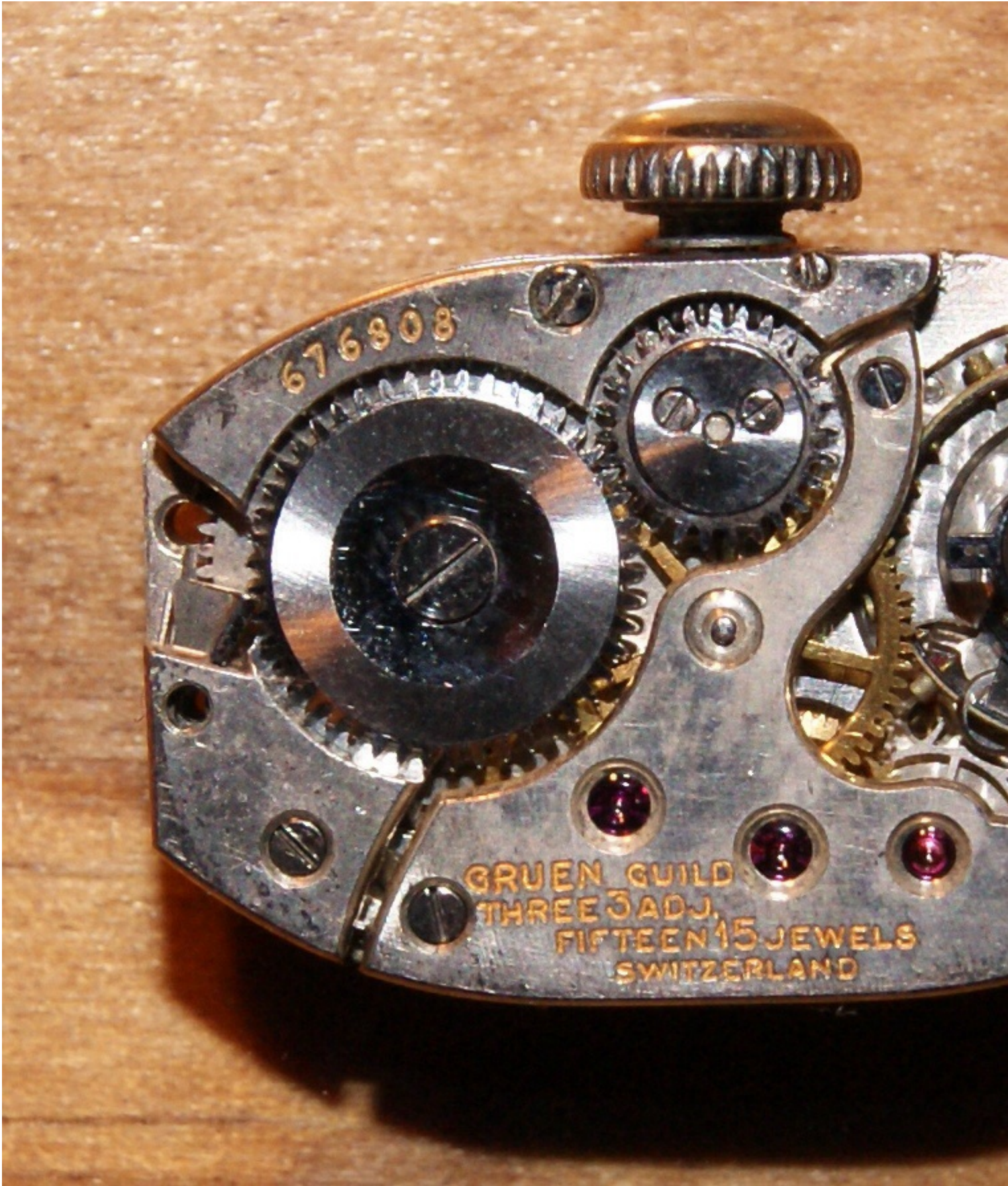
Caliber : 313
Movement Maker : Gruen Guild
Movement Serial: 676808

Bracelet : 10k Gold Filled

edit - JackW: picture alignment

File Attachments

1) [image.jpg](#), downloaded 1047 times



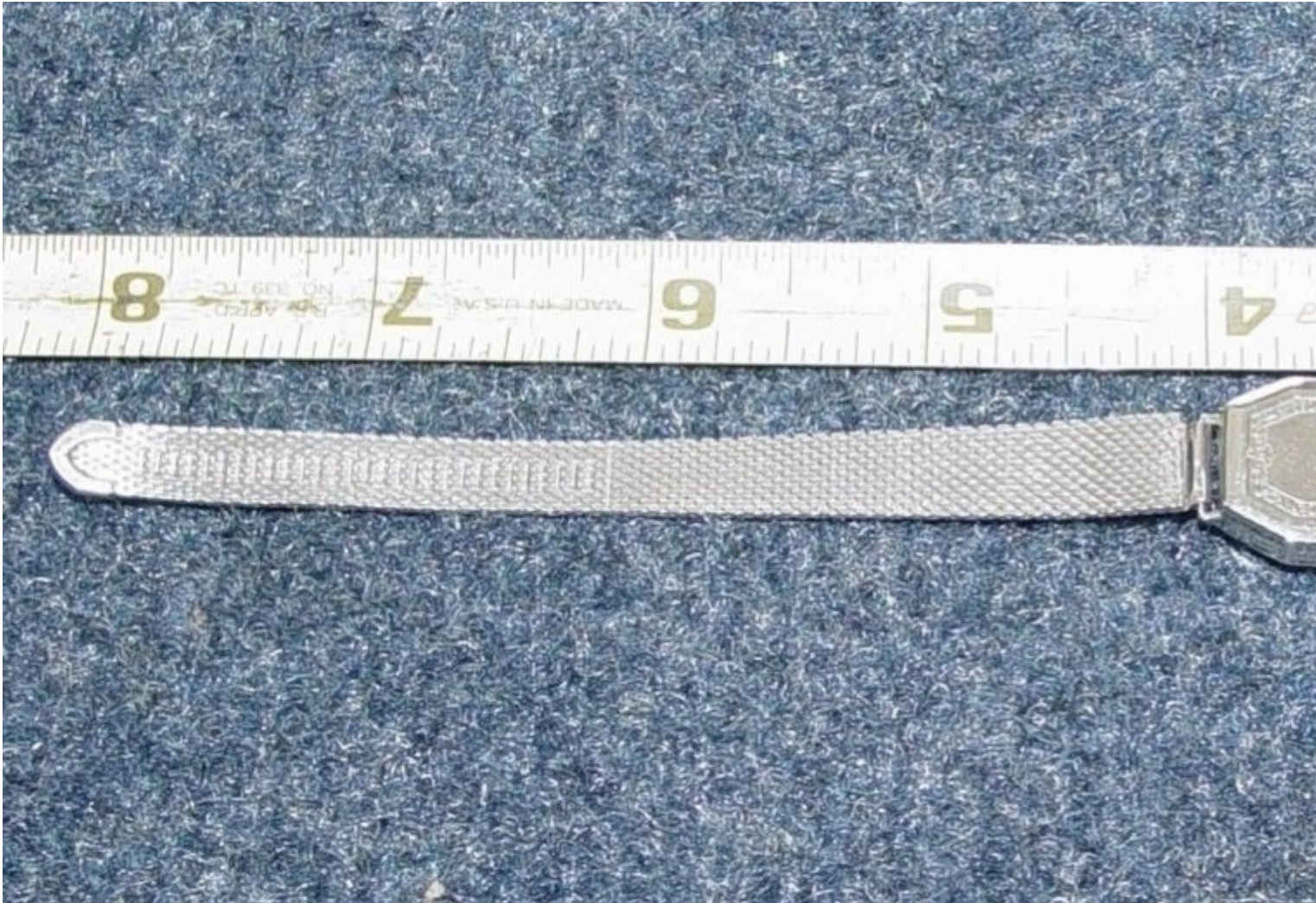
2) [image.jpg](#), downloaded 1051 times



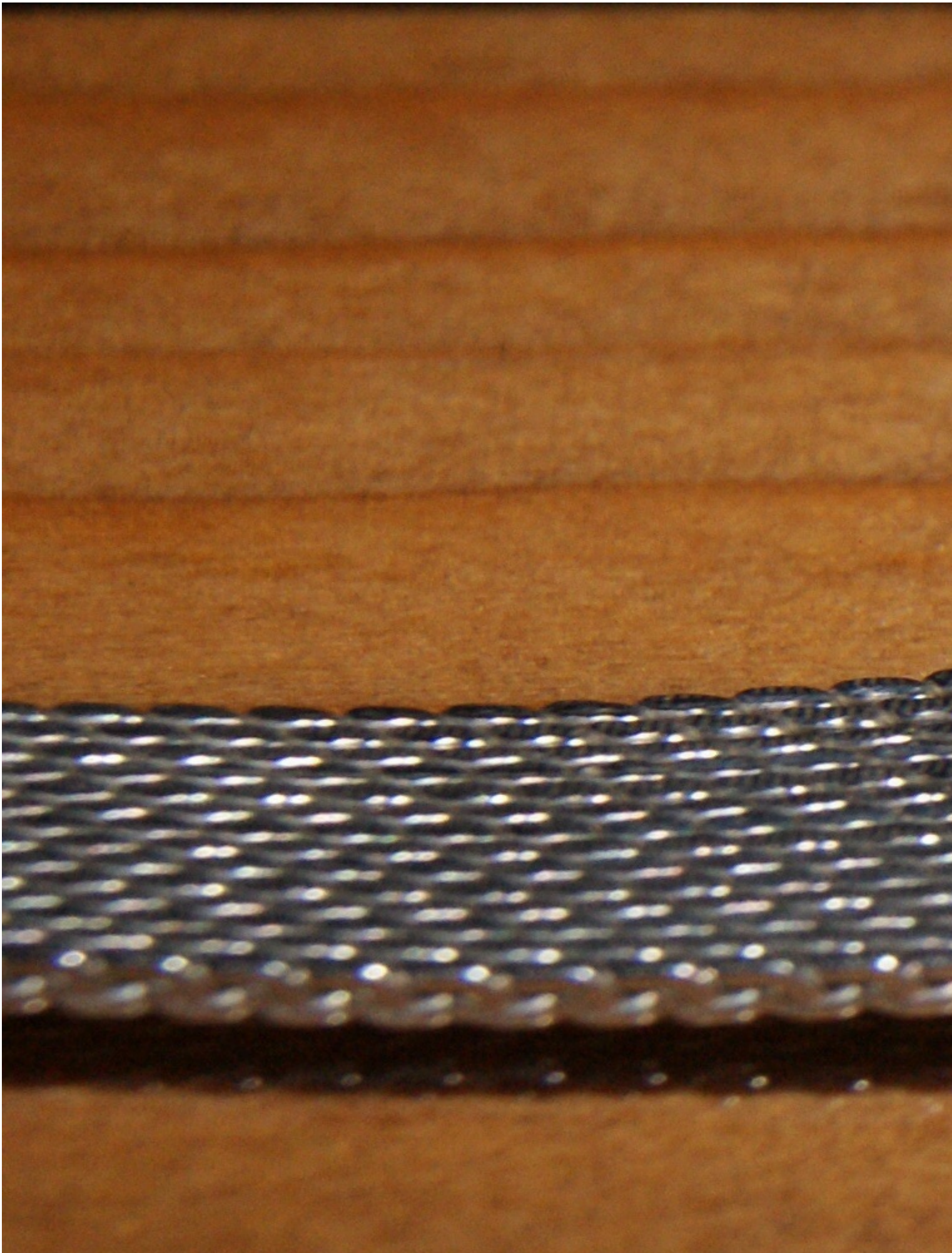
3) [image.jpg](#), downloaded 1066 times



4) [image.jpg](#), downloaded 1054 times



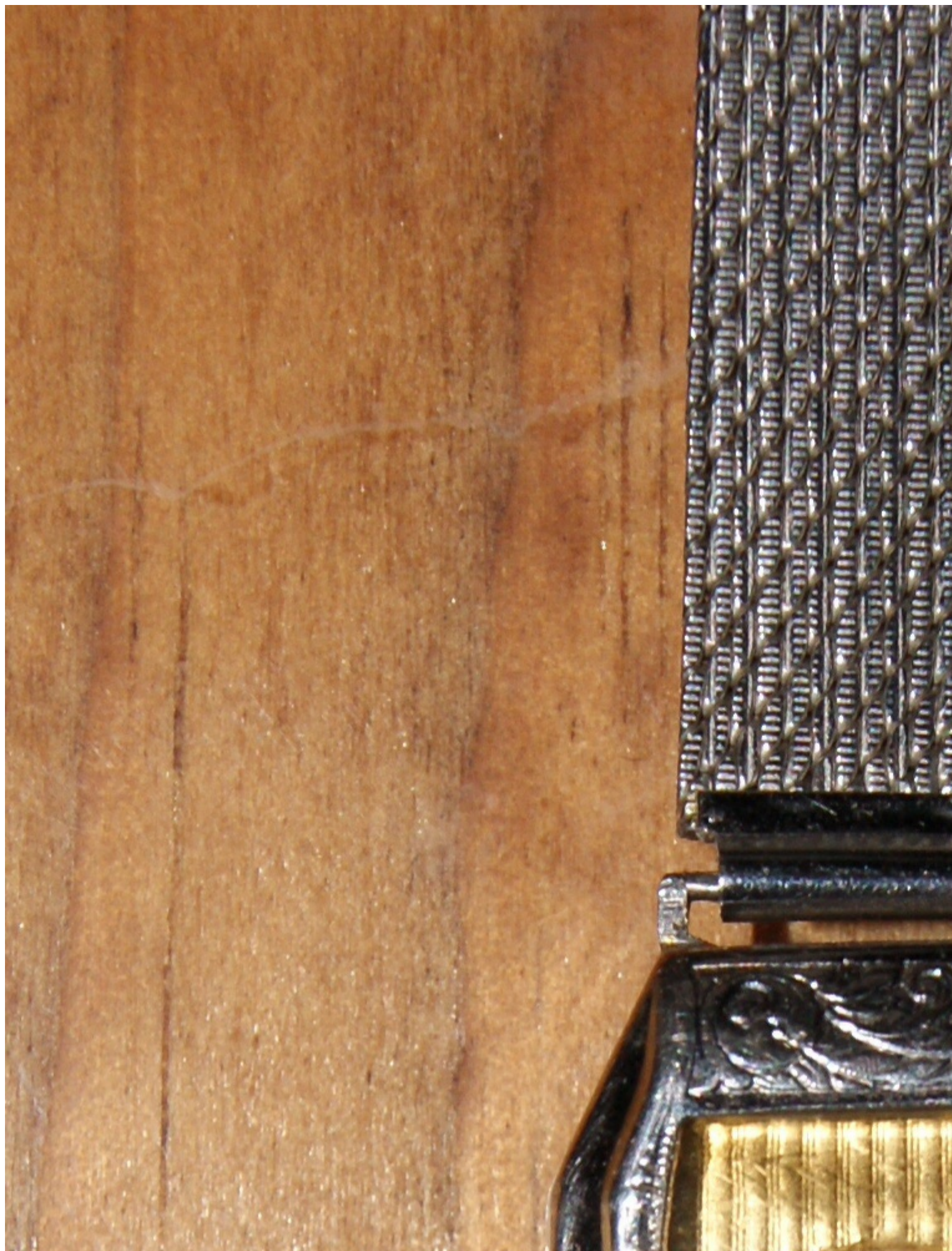
5) [image.jpg](#), downloaded 1085 times



6) [image.jpg](#), downloaded 1066 times



7) [image.jpg](#), downloaded 1001 times



8) [image.jpg](#), downloaded 1075 times



9) [image.jpg](#), downloaded 1043 times



10) [image.jpg](#), downloaded 1042 times



Subject: Re: Ladies Wrist Watch
Posted by [erin.marie](#) on Wed, 22 Jan 2014 23:40:20 GMT
[View Forum Message](#) <> [Reply to Message](#)

I have scoured the internet trying to identify this watch. The number under the balance wheel is 313. I want badly to find a new crystal for this beauty, but it's been a dead end situation for me. I even contacted the crystal expert on the forum (I forget his name, sorry) but have not heard back from him yet). I paid very little for this watch, the owner thought the dial was yellow from smoking, HeeHee. Nor did he list that it was a 14k solid gold watch. The bracelet is 10K gold filled, not a fraction gold filled like we are used to seeing. Maybe the bracelet is new? But new bracelets aren't made to fit lugs, so that part just adds to the mystery of this watch.

I'm confused because this looks like an old deco type watch but I read that Gruens made in Cincinnati were all American made watches. This watch clearly has Switzerland stamped on the bottom of the face plate.

I received it in running condition, keeping excellent time, then the movement just falls right off the watch with little to no problem and it fell out, right onto the floor and one the balance wheel is broken...UGH! Is that because it's soft due to being solid gold? I can just shake the watch lightly and the back along with the movement falls right out!

Let's just say I need your help identifying this watch. There are so many idiosyncrasies that I just can't figure it out! Even though I do re-sell some of my watches, this one is definitely a keeper.

Thank you to anyone & everyone who has anything to contribute. I appreciate any information.

Subject: Re: Ladies Wrist Watch
Posted by [Jenneke](#) on Wed, 22 Jan 2014 23:54:16 GMT
[View Forum Message](#) <> [Reply to Message](#)

You have a ladies "cartouche" wrist watch. I haven't found an exact match yet. It looks like a cartouche 377, but with a different dial.
The case style number is inside the case back. Your case style number is 78, normally the case back also has the caliber number engraved.
Your watch dates from the period 1928 - 1935.

The movement is swiss. The case is american (in house made by gruen).

Guys, is this a dust proof crown?

Sorry to hear it landed on the floor!

Subject: Re: Ladies Wrist Watch

Posted by [mikey](#) on Thu, 23 Jan 2014 00:03:43 GMT

[View Forum Message](#) <> [Reply to Message](#)

Darhin wasn't able to help out with a crystal?

Subject: Re: Ladies Wrist Watch

Posted by [timeliz](#) on Thu, 23 Jan 2014 00:09:27 GMT

[View Forum Message](#) <> [Reply to Message](#)

Pretty little watch erin.marie! Welcome to the forum.

It looks like a dust-proof crown to me. I concur with Jenneke that it's a Car. 377 and has the correct 313 movement.

Subject: Re: Ladies Wrist Watch

Posted by [JackW](#) on Thu, 23 Jan 2014 00:10:22 GMT

[View Forum Message](#) <> [Reply to Message](#)

Hi,

Don't know what to tell you on the band as to whether it is original or not. But here are a few things that I'm confident in based on your images...

Jewelers fit metal bands to cases all the time. File and polish.

The case is marked Cincinnati because the case was made by Gruen, not a contractor such as Wadsworth or Star. The Movement was imported from Switzerland.

Only the cal 335 movement was made briefly in Ohio.

Sorry to hear that the staff was damaged.

Subject: Re: Ladies Wrist Watch

Posted by [afire](#) on Thu, 23 Jan 2014 01:38:44 GMT

[View Forum Message](#) <> [Reply to Message](#)

The band looks newer, not 1920s anyway. The crown is dustproof. Nice watch.

Subject: Re: Ladies Wrist Watch

Posted by [Bazzab](#) on Thu, 23 Jan 2014 01:56:09 GMT

[View Forum Message](#) <> [Reply to Message](#)

JackW wrote on Wed, 22 January 2014 19:10 Only the cal 335 movement was made briefly in Ohio.

I was under the impression that there was other movements made at Norwood, including a Ladies 290 caliber.

Production at Norwood seems to have run for about 5 years.

B

Subject: Re: Ladies Wrist Watch
Posted by [JackW](#) on Thu, 23 Jan 2014 02:28:42 GMT
[View Forum Message](#) <> [Reply to Message](#)

Bazzab,

Paul's site certainly states that both men's and lady's watch movements were made at the Norwood faciliy. However, if it is the cal 290, I've yet to see one that isn't marked with anything other than Switzerland. Maybe I'm missing them. In fact, I'm hard pressed to recall ever seeing a woman's movement marked "US" or "Cincinnati" as the US made 335s are stamped.

Cary has the same impression too -
<http://mb.nawcc.org/showthread.php?82487-Only-U-S-made-Gruen&p=617389&viewfull=1#post617389>

Subject: Re: Ladies Wrist Watch
Posted by [Bazzab](#) on Thu, 23 Jan 2014 03:26:23 GMT
[View Forum Message](#) <> [Reply to Message](#)

Jack

Cary seemed to be very certain, in the NAWCC link, that the 290 was produced at Norwood, and also in this earlier post

<http://ihc185.infopop.cc/eve/forums/a/tpc/f/9886009961/m/9821098772>

I have never look at a 290 movement, so I cant say whats stamped on them,

Was there not a photo on the old forum I think I remember a post about Norwood and movements made?

Subject: Re: Ladies Wrist Watch
Posted by [JackW](#) on Thu, 23 Jan 2014 05:13:37 GMT
[View Forum Message](#) <> [Reply to Message](#)

B,

I'm very curious to know too. I had not seen the IHC posting by Cary, nor was I aware of the 642 being made at Norwood. I'd like to see that. Otherwise, I've seen examples of all the variants of the 335 cal in 17, 21 and 23 Jewels as well as the sweeps seconds variations.

Hopefully Cary can chime in and put this to rest. He offered photos in that IHC thread but the thread dropped later on.

Cheers!

Subject: Re: Ladies Wrist Watch
Posted by [erin.marie](#) on Thu, 23 Jan 2014 19:59:05 GMT
[View Forum Message](#) <> [Reply to Message](#)

Thanks for all the info. I figured it was a cartouche, I was just confused with the Cincinnati in the case. So, what are my chances of finding a crystal for this beauty? I think you'd all be in agreement with me that the yellow, scuffed plastic crystal is just tacky.

Subject: Re: Ladies Wrist Watch
Posted by [timeliz](#) on Thu, 23 Jan 2014 21:03:35 GMT
[View Forum Message](#) <> [Reply to Message](#)

Erin,
Your watch repair person should be able to fit a new crystal. I imagine you will be taking your damaged movement in for repair. Depending on how long he/she has been in business it's possible he may have some of these older ones, otherwise, should be able to cut one to fit.

Subject: Re: Ladies Wrist Watch
Posted by [erin.marie](#) on Thu, 23 Jan 2014 21:25:41 GMT
[View Forum Message](#) <> [Reply to Message](#)

Is it common for solid gold watches to "lose their shape" because they are softer than gold filled models? The back/movement just falls out with the smallest bump. Can this be repaired, or re-shaped? I've only had this watch for 3 weeks so it's not like I did it. It came that way.

Subject: Re: Ladies Wrist Watch
Posted by [erin.marie](#) on Thu, 23 Jan 2014 21:31:02 GMT
[View Forum Message](#) <> [Reply to Message](#)

And, yes, JackW, I believe I can have a crystal cut for it but the person I've used in the past to repair my watches takes way too long (he's had three of my watches since last spring). He also charges way too much as far as I'm concerned. I'm presently working with a new repair person.

As a matter of fact, I'm going to call right now and go pick up my watches that I've been missing for almost a year now.

Subject: Re: Ladies Wrist Watch
Posted by [mikey](#) on Thu, 23 Jan 2014 21:56:14 GMT
[View Forum Message](#) <> [Reply to Message](#)

I'll check with DarHin on the crystal.

Subject: Re: Ladies Wrist Watch
Posted by [afire](#) on Thu, 23 Jan 2014 23:05:44 GMT
[View Forum Message](#) <> [Reply to Message](#)

erin.marie wrote on Thu, 23 January 2014 15:25: Is it common for solid gold watches to "lose their shape" because they are softer than gold filled models? The back/movement just falls out with the smallest bump.

That can happen with any watch case. I usually just apply a little pressure all around that top lip of the case back, more often than not just by pushing it against the edge of my bench, and that usually does the trick without fouling up the fit between the bezel and back.

About the crystal, I have an factory assortment with a ton of Cartouche models that I'll never use. I'll try to take a look.

Subject: Re: Ladies Wrist Watch
Posted by [erin.marie](#) on Sat, 25 Jan 2014 04:41:47 GMT
[View Forum Message](#) <> [Reply to Message](#)

Thanks afire!

Subject: Re: Ladies Wrist Watch
Posted by [afire](#) on Tue, 28 Jan 2014 04:22:56 GMT
[View Forum Message](#) <> [Reply to Message](#)

Erin, if you're still looking, I may have a crystal. I'm not positive, but I think it's a match. PM me an address and I'll send it.

Subject: Re: Ladies Wrist Watch
Posted by [mikey](#) on Tue, 28 Jan 2014 13:49:02 GMT
[View Forum Message](#) <> [Reply to Message](#)

I haven't heard back from DarHin at all regarding crystals. Maybe the Canadian cold weather has reached all the way down to him and they're bundled up around the fireplace for a while.
